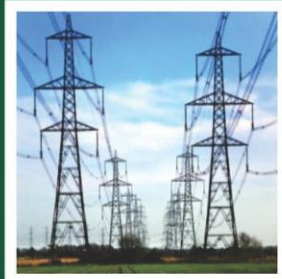


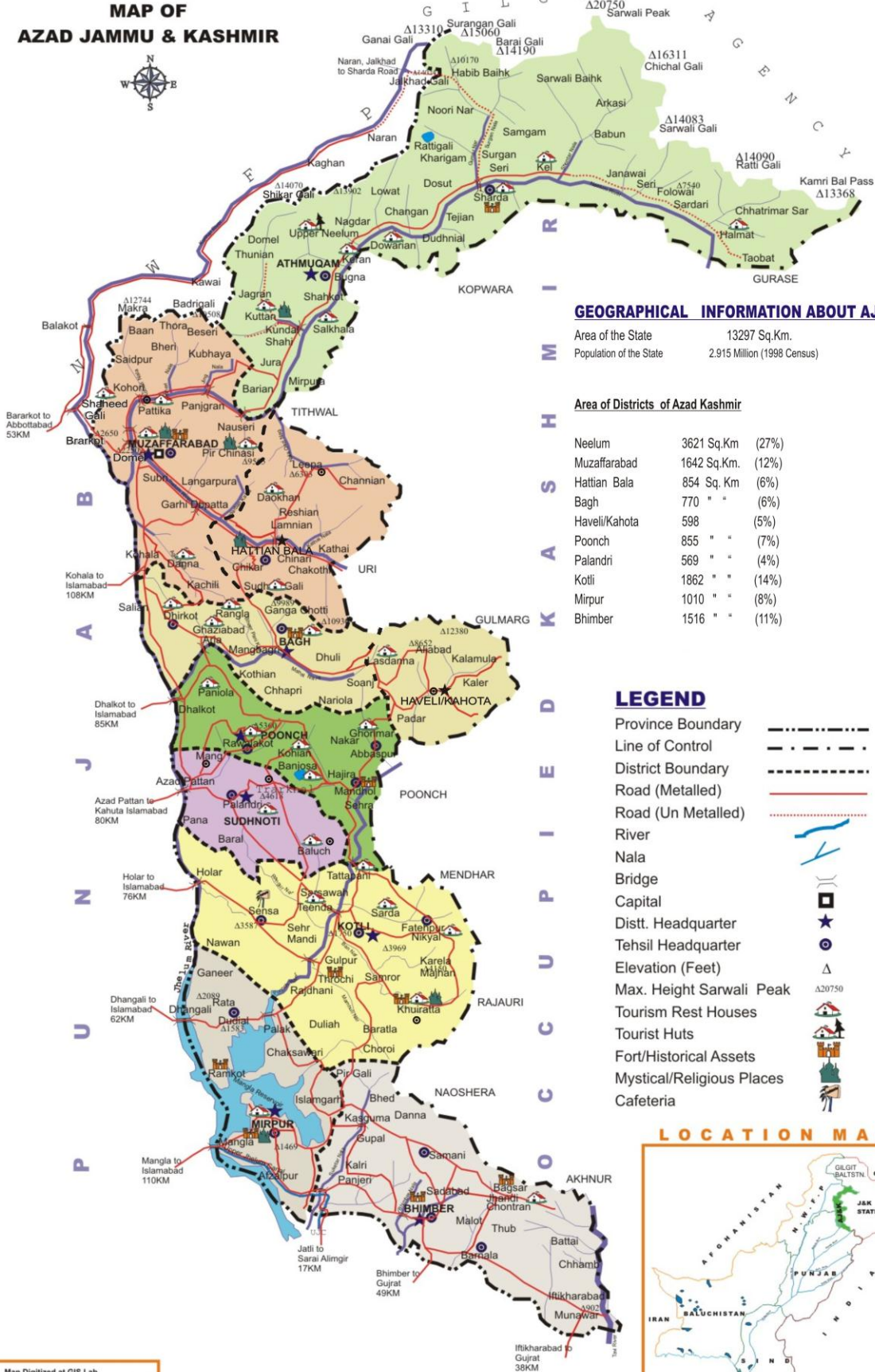


**Azad Government of the State of
Jammu & Kashmir**

**AZAD JAMMU & KASHMIR
AT A GLANCE
2011**



MAP OF AZAD JAMMU & KASHMIR



GEOGRAPHICAL INFORMATION ABOUT AJK

Area of the State 13297 Sq.Km.
 Population of the State 2.915 Million (1998 Census)

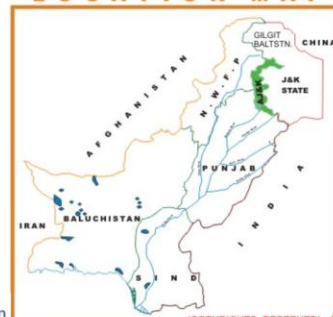
Area of Districts of Azad Kashmir

Neelum	3621 Sq.Km	(27%)
Muzaffarabad	1642 Sq.Km.	(12%)
Hattian Bala	854 Sq. Km	(6%)
Bagh	770 " "	(6%)
Haveli/Kahota	598	(5%)
Poonch	855 " "	(7%)
Palandri	569 " "	(4%)
Kotli	1862 " "	(14%)
Mirpur	1010 " "	(8%)
Bhimber	1516 " "	(11%)

LEGEND

- Province Boundary
- Line of Control
- District Boundary
- Road (Metalled)
- Road (Un Metalled)
- River
- Nala
- Bridge
- Capital
- Distt. Headquarter
- Tehsil Headquarter
- Elevation (Feet)
- Max. Height Sarwali Peak
- Tourism Rest Houses
- Tourist Huts
- Fort/Historical Assets
- Mystical/Religious Places
- Cafeteria

LOCATION MAP



Map Digitized at GIS Lab.
 Land Use Planning, Planning & Development Deptt.
 Govt. of AJ&K, Muzaffarabad.

Telex: 05822-921232, 921176, Fax:921176, E-Mail: gislabajk@gmail.com

(COPYRIGHTS RESERVED)

Foreword

I am happy to note that Planning & Development Department has been able to publish revised version of 'AJK at a Glance 2011-2012' which provides wide range of statistics on diverse aspects of socio-economic conditions of the State. These statistics are of immense importance and use for policy makers, planners and public at large.

AJ&K is blessed with abundant natural resources i.e. water, minerals, forests, places of tourist attractions and above all the dynamic educated youth. The development vision of the present Prime Minister AJ&K reflects the aspiration of the people and firm resolve of his government to ameliorate the socio-economic conditions in the state. Highest priority has been assigned to Hydro Power Projects with financial support from Federal Government as well as other development partners. The people of AJ&K acknowledge with thanks the generous and continued support extended by the Government of Pakistan despite prevalent resources crunch and energy crises in the country.

I take this opportunity to express my gratitude to all those officers of P&DD who contributed towards compilation of this document and deserve deep appreciation for rendering valuable efforts in making out this quality document.

I hope this book will prove to be an informative and useful reference document for nation building departments of GOAJ&K, researchers, scholars, planner's development partners and all other who may wish to benefit

I look forward for further improvement and welcome any suggestion in this regard.

(Abid Ali)
Addl. Chief Secretary (Dev.)

Introduction

Azad Jammu and Kashmir lies between longitude 73° - 75° and latitude of 33° - 36° and comprises of an area of 5134 Square Miles (13297 Square Kilometers).

The topography of the area is mainly hilly and mountainous with valleys and stretches of plains. Azad Kashmir is bestowed with natural beauty having thick forests, fast flowing rivers and winding streams, main rivers are Jehlum, Neelum and Poonch. The climate is sub-tropical to temperate highland type with an average yearly rainfall of 1300 mm. The elevation from sea level ranges from 360 meters in the south to 6325 meters in the north. The snow line in winter is around 1200 meters above sea level while in summer, it rises to 3300 meters.

Population:-

According to the 1998 population census the state of Azad Jammu & Kashmir had a population of 2.973 million, which is estimated to have grown to 4.059 million in 2011. The population comprises of 50.18% male and 49.82% females i.e, 101 males per 100 females. Almost 100% population comprises of Muslims. The Rural: Urban population ratio is 88:12. The population density is 305 persons per Sq. Km. Average family size is estimated at 6.7 members. Literacy rate which was 55% in 1998 census has now raised to 64%. Approximately the infant mortality rate is 56 per 1000 live births, whereas the immunization rate for the children under 5 years of age is more than 95%.

Per Capita Income and Employment:-

The majority of the rural population depends on forestry, livestock, agriculture and non-formal employment to eke out its subsistence. National average per capita income has been estimated to be 1254 US\$*. Unemployment ranges from 9.0 to 13%. In line with the National trends, indicators of social sector particularly health and population have not shown much proficiency. Efforts have been made during the recent past to make up this

deficiency so that the fruits of development can be brought to the door steps of common men.

*Economic survey of Pakistan 2010-11

Agriculture:-

Area under cultivation is around 193984 hectares, which is almost 13% of the total Geographical area out of which 92% of the cultivable area is rain-fed. About 89% households have very small land holdings between one to two acres. Major crops are Maize, Wheat & Rice whereas minor crops are Grams, Pulses (red kidney beans), Vegetables and Oil-seeds. Major fruits produced in AJK are Apple, Pears, Apricot and Walnuts. Agriculture and livestock income ranges between 30-40% of household earnings.

The remaining share comes from other sources including employment, businesses and remittances received by the families of Kashmiries living abroad working abroad. Reduced agriculture productivity has adversely affected the traditional lifestyle and per capita income of the rural households.

Forestry:-

About 42.6% of the total Geographical area (0.567 million hectares), is controlled by the Forests Department. The per capita standing volume is 330 Cft and per capita forest area is 0.38 Acre. Annual wood demand is 1.65 million cubic meters and sustainable production is 1.94 million cubic meters. The local communities have traditional rights in terms of use of the forests and on an average three trees are burnt by one household every year for the fuel-wood requirements in the absence of alternate sources. Similarly about 5 trees on average are required to construct a house for which the wood roofs have to be replaced after every 8-10 years.

Livestock:-

On an average in AJK, livestock consists of 3 heads and 2 head per household for small ruminants and cattle/buffalo respectively. Overall gross annual income from livestock is Rs. 1,600.00 per household and contribution of milk is about 68%.

Presidents of Azad Jammu & Kashmir

Name	From	To
o Sardar Muhammad Ibrahim Khan	24 October, 1947	29 May 1950
o Captain (R) Syed Ali Ahmed Shah	30 May, 1950	3 Dec, 1951
o Mir Waiz Molana Muhammad Yousaf Shah	4 December, 1951	19 June, 1952
o Colonal (R) Sher Ahmed Khan	20 June, 1952	30 May, 1956
o Mir Waiz Molana Muhammad Yousaf Shah	31 May, 1956	7 Sep, 1956
o Sardar Muhammad Abdul-Qayyum Khan	8 Sep, 1956	13 April, 1957
o Sardar Muhammad Ibrahim Khan	14 April ,1957	14 May, 1959
o Mr. K.H. Khursheed	15 May, 1959	15 Aug, 1964
o Khan Abdul Hameed Khan	16 August, 1964	17 Oct, 1968
o Brigadier (R) Abdur-Rahman	18 Oct, 1968	10 Nov, 1970
o Sardar Muhammad Abdul-Qayyum Khan	11 Nov, 1970	16 Apr, 1975
o Sheikh Manzar Masaud	17 April, 1975	4 June, 1975
o Sardar Muhammad Ibrahim Khan	5 June, 1975	31 Oct, 1978
o Brigadier Mohammad Hayat Khan	1 Nov, 1978	31 Jan, 1983
o Major General (R) Abdur-Rahman	1 Feb, 1983	30 Sep, 1985
o Sardar Muhammad Abdul-Qayyum Khan	1 Oct, 1985	12 Aug, 1991
o Sardar Sikandar Hayat Khan	12 August,1991	12 May, 1996
o Abdul Rasheed Abbasi	12 May, 1996	26 Aug, 1996
o Sardar Ibrahim Khan	26 August, 1996	31 July, 2001
o Sardar Muhammad Anwar Khan	1 August, 2001	26 July, 2006
o Raja Zulqurnain Khan	25 August, 2006	24- Aug- 011
o Sardar Muhammad Yaqoob Khan	26- Aug- 2011	To be Continue

Prime Ministers of Azad Jammu & Kashmir

Name	From	To
o Sardar Muhammad Ibrahim Khan	14 Oct, 1947	23 Oct, 1947
o Khan Abdul Hameed Khan	5 June 1975	11 Aug, 1977
o Sardar Sikandar Hayat Khan	June, 1985	29 June 1990
o Mumtaz Hussain Rathoor	29 June 1990	29 July 1991
o Sardar Muhammad Abdul-Qayyum Khan	29 July 1991	30 July 1996
o Barrister Sultan Mehmood Choudhery	30 July , 1996	24 July 2001
o Sardar Sikandar Hayat Khan	24 July 2001	23 July 2006
o Sardar Attique Ahmed Khan	24 July 2006	06 Jan 2009
o Sardar Muhammad Yaqoob Khan	06 Jan 2009	21 Oct 2009
o Raja Farooq Haider Khan	22 Oct 2009	28-July-2010
o Sardar Attique Ahmed Khan	29 July 2010	25-July-2011
o Chaudry Abdul Majid	26 July 2011	To be Continue

Chief Executives of the Azad Jammu & Kashmir

Name	From	To
o Major General (R) Abdul Rahman	12 August 1977	31 Oct,1977
o Brigadier (R) Mohammad Hayat Khan	1 Nov, 1977	31 Jan, 1983
o Major General (R) Abdul Rahman	1 Feb, 1983	3 Sep, 1985

Government

Azad Kashmir has a parliamentary form of Government. The President of Azad Jammu and Kashmir is the Constitutional Head of the State, while the Prime Minister, supported by a council of Ministers, is the Chief Executive. Azad Kashmir has its own legislative assembly comprising 41 directly and 8 indirectly elected members, a member each from Technocrats, Mashaikhs, Overseas Kashmiris and 5 female members. The AJ&K has its institutions of Supreme Court and High Court.

Administrative Set-up.

Azad Kashmir is divided into three divisions (Muzaffarabad, Mirpur & Poonch) and ten administrative districts with Muzaffarabad as the capital of the state. The Muzaffarabad Division comprises of Muzaffarabad, Hattian and Neelum, Rawalakot Division comprises of Bagh, Haveli, Poonch & Sudhnuti districts whereas districts of Mirpur Division are Mirpur, Kotli & Bhimber. These ten districts are further divided into 30 subdivisions. 189 Union councils and 1654 villages. There are 2 Municipal Corporations, 11 Municipal Communities, 31 Markaz Councils , which are administrated by the LG&RD Department.

Economic Development

In 1947, at the time of partition, the economy in Azad Jammu and Kashmir was on subsistence level but the determination to develop the area was there. It was in early 60's when economic development of the area started in earnest. Despite financial constraints, successive governments made good efforts in laying down a proper path for the development of the area.

Physical Infrastructure

Roads:

Roads and air transport are the only mode of transportation in Azad Jammu and Kashmir. The present road length and its comparison with the position in 1947 are given below: -

Road Length (Kms)

	1947	2011
Metalled	100	6390
Fair-weather	165	6329
Total	265	12719
Road Density (Km Per Sq.Km)	0.008	0.48

Airports

The Government of Azad Jammu and Kashmir in collaboration with the Civil Aviation Authority of Pakistan has constructed two small airports in Muzaffarabad and Rawalakot cities in order to provide easy and fast mode of travel (Flights presently suspended).

1.5 million People belonging to AJ&K are living abroad; there is need for construction of international airports in AJ&K.

Power

At present, the installed Grid capacity is 647.30 MVA. About 25722 km transmission lines have been extended to 1651 villages out of a total of 1654 villages and about 3.616 million population have been provided with electricity supply. The per capita electricity consumption is 284.5 KWH and within next three years 100% population of AJK is planned to be provided with power connections. The Government lays great emphasis on generating electricity in order to meet the growing domestic as well as industrial requirements. It has been planned to launch a comprehensive programme for constructing Hydro power stations to exploit this vast potential.

Piped Water Supply

At the time of independence, availability of piped water supply was non-existent but significant progress has now been made in this regard. Presently 82% of the urban population and 44 % of rural population has been provided with a piped water supply through house connections and public stand posts. Out of 1654 villages, 1032 have been provided with water supply facility.

Special Communications Organization

SCO raised since 1976 is providing state of the art, modem IT and Telecom facilities in the most difficult region of Azad Jammu & Kashmir current services include landline Telephone (PSTN), Mobile (GSM), Wireless Local Loop (WLL), Internet Broadband (DSL) and Digital Cross Connect (DXX). Despite competitive market, de-regulated telecomm environment and presence of all cellular giants in the area, SCO has been declared Significant Market Player (SMP) by PTA during current year.

Vision of the SCO is stipulation of reliable, effective, innovative and up-to-date voice and data communication services to the people living in the most rugged / arduous terrain.

Social Infrastructure

Health Facilities

Health coverage in Azad Jammu & Kashmir is still inadequate. There are approximately 2249 hospital beds available in the area averaging one bed per 1801 people. The total number of doctors, including administrative doctors, health managers & dentists is 781 out of which there are 450 medical officers, 67 dental surgeons, 212 specialists and 52 health managers giving an average of 0.202 per 1000 population in respect of doctors, 0.114 Per 1000 Population in respect of medical officers, 0.017 per 1000 Population in respect of dentists, 0.053 per 1000 Pop. in respect of specialists and 0.013 per 1000 pop. in respect of health managers, whereas only 30 hospital beds & 11 dispensaries were available in the area at the time of independence.

Education

Education has been a priority of the Govt. of Azad Jammu & Kashmir as about 26% of its total recurring budget besides 8 % of the total development budget is allocated to this sector. As a result of this substantial investment, AJ&K's literacy rate is well 64% which is significantly higher than the national average of Pakistan. At present the gross enrolment rate* at primary level is 95% for boys and 88% for girls (between the age of 5-9).

*Including the enrolment in private schools.

Investment Opportunities in Azad Kashmir

The state of Azad Jammu & Kashmir by virtue of its topography, meteorology, hydrology & administrative setup provides huge opportunities of investment in various sectors. Keeping in view the investment potential in AJK the Government is encouraging investment in the following sectors:-

Industrial Investment

The Government has adopted the Industrial policy of Federal Govt. according to which all types of industries are allowed to be established in the territory of AJK except Arms & Ammunition, Security printing, Explosive material and Radioactive material.

In order to accelerate the pace of development the department of Industries has established 6 Industrial Estates in various districts of Azad Kashmir with basic infrastructure like roads, water supply, and sewerage system and telephone & electricity facilities. The number of medium & large scale Industries which have already been established in different districts of Azad Kashmir is 1465.

In view of the localized requirement of AJK, there is huge potential for Industries like Food, Hydro power generation, Ready made garments, furniture and plastic products in the area.

In order to boost the Industrial Production in AJK, the Govt. is providing incentives to the industrialists including concession in different taxes and providing the energy on cheaper rates for first five years to run the Industries. It will be advisable that detailed feasibility of Industrial products must be carried out for making final decisions of investment.

Development of Cottage Industry and Kashmiri Handicrafts.

There are many investment opportunities in traditional handicrafts of Kashmir. Azad Kashmir Small Industries Corporation (AKSIC) established in 1992, is an official body committed to promote the development of handicrafts and in turn the economic betterment of the working handicraftsmen. AKSIC objective is to educate and assist the working craftsmen to set up and run their business properly. Equipped with God gifted resources and manned with requisite expertise, the AKSIC is committed to honor the buyers' demands, preferences and requirements.

Mineral Resources.

The Geological environment of AJK comprises generally 3 types of rocks i.e. Sedimentary, Igneous and Metamorphic. The Industrial minerals and base metals are found in all of 3 rocks spreading all over the AJK territory. In AJK mineral exploration activities started in 1973 by AKMIDC, a state owned corporation and emphasis was laid on assessment of potential economic deposits and an analysis of value of the different minerals discovered in the area so far amount to 137.915 million tons.

Hydro Power Generation

Up to 1973-74 electricity facility was available to few villages of District Muzaffarabad & Mirpur. In 1973-74, a phased program was planned to provide electricity to urban & rural population, which is being continued. Under this program, several schemes have been implemented through which electricity distribution network has been expanded up to 98% population of rural areas of AJ&K. Approximately 495710 service connections have been provided under this program.

AJ&K has a potential of generation of 5000 MW of electricity using its natural resources. The Hydro Power projects in AJK under implementation are:-

Status Hydro Power Projects in AJK

	Status	Capacity(MW)
1	Commissioned	1040.800
2	Under Construction	989.92
3	Projects Proposed in Public Sector	137.4
4	Feasibility Study Completed	162.00
5	Project Under Construction in Private Sector	231.00
6	Projects Proposed in Private Sector	3059.9
7	Identified Sites	2370.00
8	Project Under Process in PPC	289.2
TOTAL		8280.22

Projects Completed/ Commissioned

S.#	PROJECT SITE	CAPACITY (mw)	DISTRICT
1	Mangla	1000.00	Mirpur
2	Jagran	30.4	Neelum

3	LEEPA	1.60	Muzaffarabad
4	Kathai	1.60	Muzaffarabad
5	Kathai Ext.	1.60	Muzaffarabad
6	Kel	0.4	Neelum
7	Kundal Shahi	2.00	Neelum
8	Sharian HPP	3.2	Hattian
Total		1040.8	

Project under Construction in Public Sector

S #	Project Site	Capacity (MW)	Executing Agencies
1	Sharda, Neelum	3.00	HEB
2	Battar, Havelli	4.80	HEB Federal Funder
3	Dhannan, Kotli	1.50	HEB Federal Funder
4	Qadirabad, Bagh	3.00	HEB
5	Rahra, Bagh	3.20	HEB
6	Halmat, Neelum	0.32	HEB
7	Guin Nullah, Poonch	0.25	HEB
8	Hillan, Havelli	0.60	HEB
9	Ranger-I, Poonch	0.60	HEB
10	Ranger-II, Poonch	0.45	HEB
11	Neelum-Jhelum	969.00	WAPDA
Total		986.72	

Projects under Construction in Private Sector

S#	Project site	Capacity(MW)	Sponsor
1	Patrind	147.00	K Water & Sambu
2	New Bong Escape	84.0	Laraib Energy
Total		231.00	

Geographical Feature

Area	5134 Sq. Miles 13297 Sq Km. 1.330 Million Hectors 3.286 million Acres
Longitude Latitude	73 ^o – 75 ^o 33 ^o – 36 ^o
Topography	Mainly hilly and Mountainous with terraces Valleys and Plains at some places.
Climate Temperature	Sub-tropical highland type Maximum 45.2 °C Minimum -2.6 °C
Rainfall	1300 mm on the average
Elevation from sea • Range from South • Range from North	360 meters 6325 meters
Snow Line • In Winter around • In Summer around	1200 meters 3300 meters
Main Rivers	Jhelum , Neelum & Poonch

Area & Population-2011

**Total area of Azad Jammu & Kashmir 13297 sq. Kms
(5134 sq. Miles)**

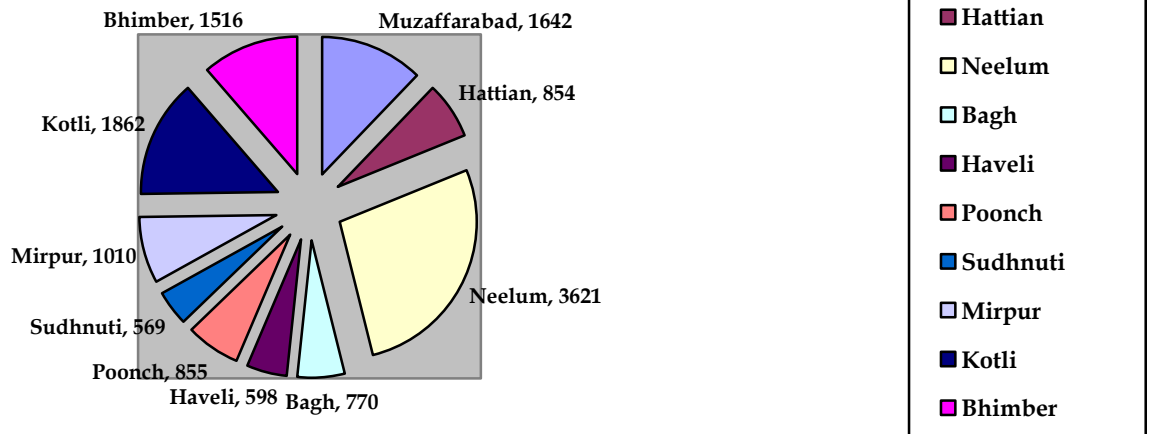
**Total Population of Azad Jammu & Kashmir 40,59,000
4.059Million)**

District-Wise Area, Population, Density, Growth Rate & Household-Size In Azad Kashmir						
Districts	Area (Sq.Kms)	Population Census 1998 (Millions)		MICS 2007-08	Projected Population 2011(million)	Density in2011 (Persons/ Sq.Km)
		Population	Growth rate	House-hold* Size		
Muzaffarabad	1642	0.454	2.80%	5.8	0.650	396
Hattian	854	0.166	2.80%	5.8	0.238	278
Neelum	3621	0.126	2.80%	7.6	0.180	50
Mirpur	1010	0.334	2.09%	6.7	0.437	433
Bhimber	1516	0.302	2.60%	6.7	0.422	278
Kotli	1862	0.563	2.59%	7.3	0.785	422
Poonch	855	0.411	2.24%	6.8	0.548	641
Bagh	770	0.282	2.00%	6.8	0.365	474
Haveli	598	0.112	2.00%	6.8	0.145	242
Sudhnuti	569	0.224	1.99%	6.6	0.289	509
TOTAL	13297	2.973	2.41%	6.7	4.059	305

Projected on the basis of 1998 census.

Sources:-Population Census Organization Islamabad.

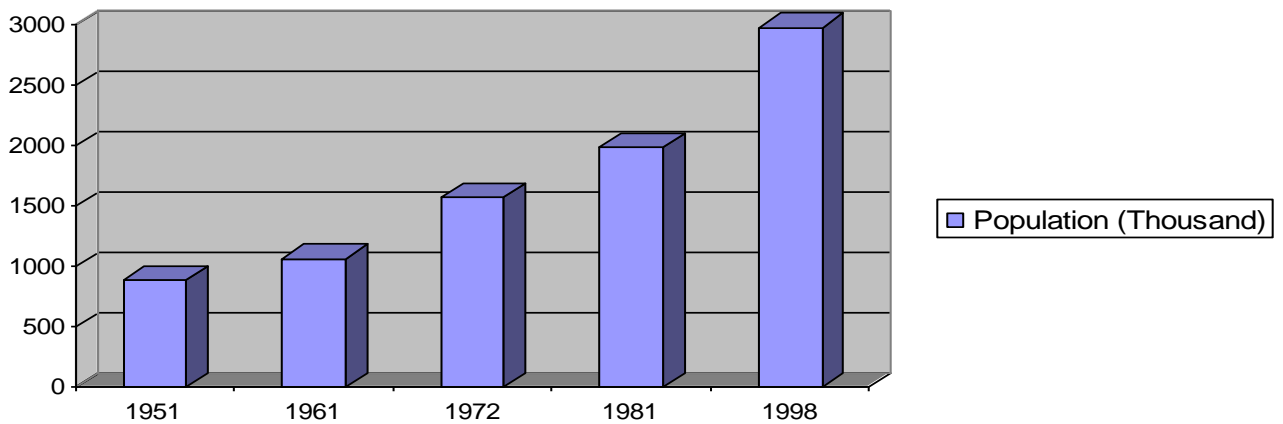
District wise Area of AJ&K (Sq. Kms)



Source: 1998 Census

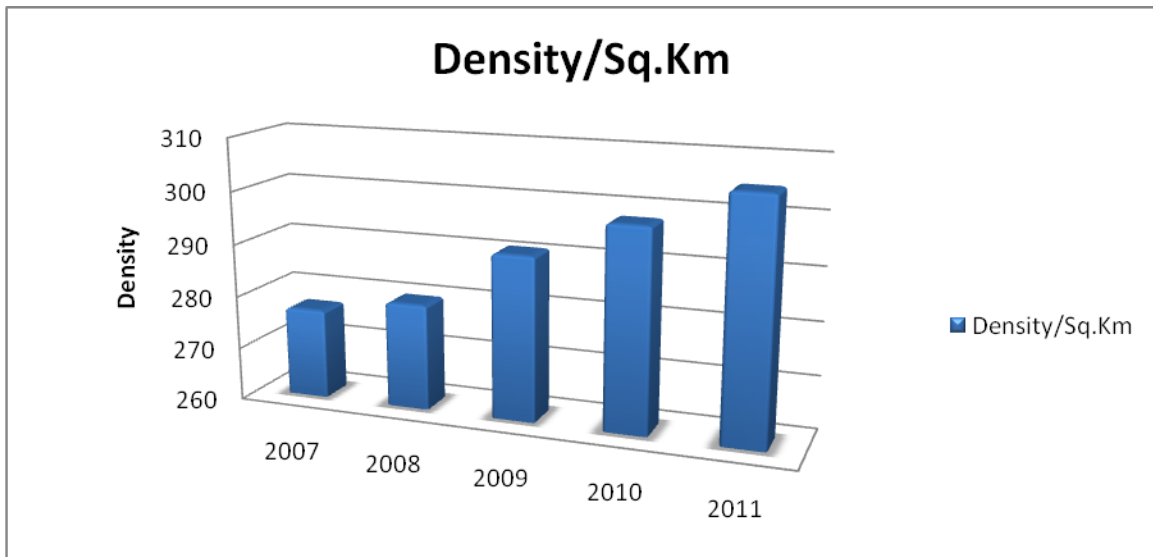
Population and Intercensal increase since 1951

Description	1951	1961	1972	1981	1998
Population (Thousand)	886	1065	1573	1983.47	2972.50
Inter censal increase (Percent)	-	20.16	47.71	26.11	49.86
Commutative increase (Percent)	-	20.16	77.54	123.87	235.50
Average annual Growth rate (Percent)	-	1.87	3.43	2.74	2.41



Density per Square Kilometer in AJ&K

Years	2007	2008	2009	2010	2011
Density /Sq. Km	277	280	291	298	305

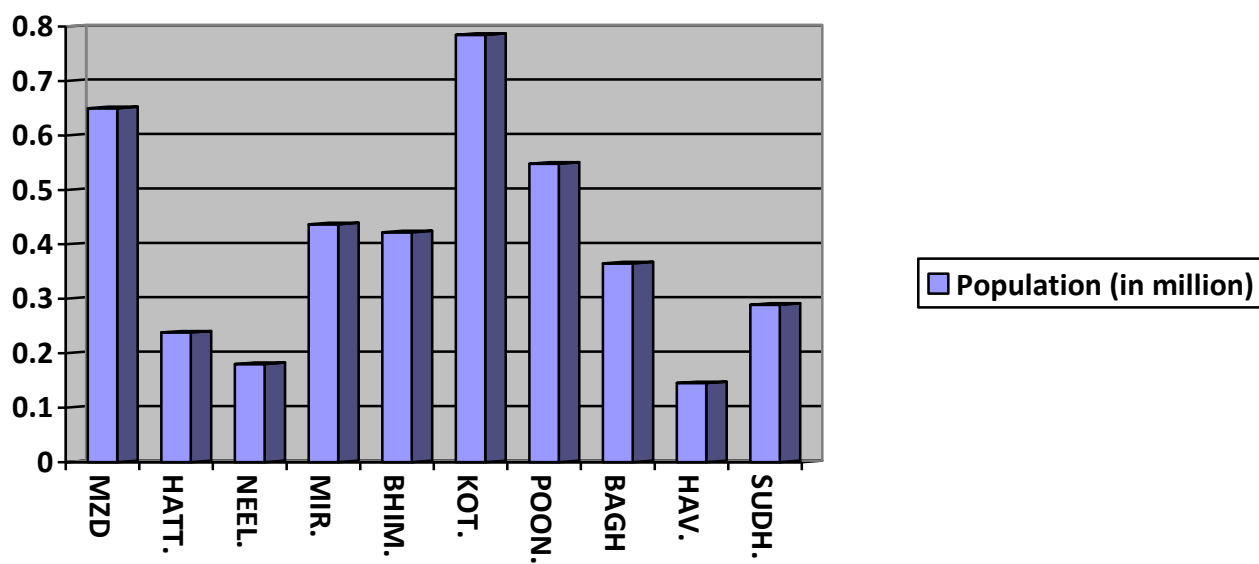


Districts wise Area and Population of AJ&K2011

Districts		Area		Population	
		Sq. Kms	%	Projected population 2011	%
1.	Muzaffarabad	1642	12.4	0.650	16
2.	Hattian	854	6.4	0.238	6
3.	Neelum	3621	27.2	0.180	4
4.	Mirpur	1010	7.6	0.437	11
5.	Bhimber	1516	11.4	0.422	10
6.	Kotli	1862	14.0	0.785	19
7.	Poonch	855	6.4	0.548	14
8.	Bagh	770	5.8	0.365	9
9.	Haveli	598	4.5	0.145	4
10.	Sudhnuti	569	4.3	0.289	7
Total AJ&K		13297	100	4.059	100

Projected on the basis of 1998 census.

Sources:-Population Census Organization Islamabad.



District Wise AJ&K Population

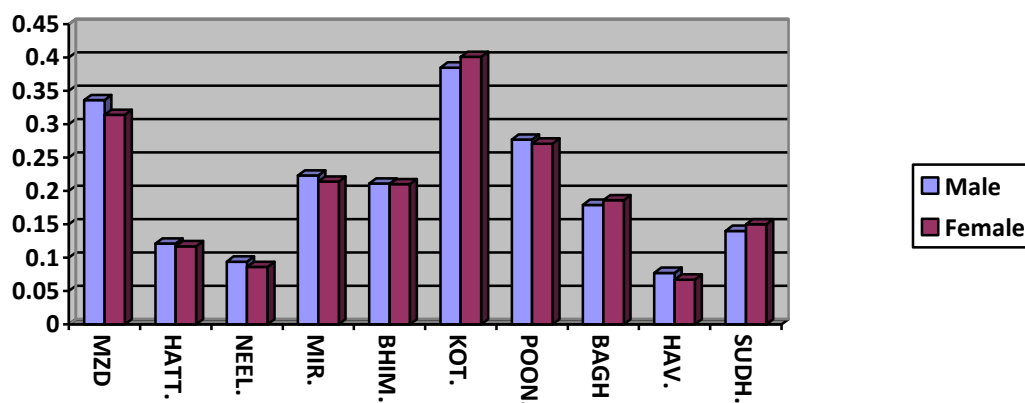
District /Sex wise Urban Rural Population 1998 Census

District	Urban			Rural			G.Total		
	Male	Female	Total	Male	Female	Total	Male	Female	Total
M.abad	47130	38332	85462	187610	180903	368513	234740	219235	453957
Hattian	5329	5311	10640	78861	76463	155424	84190	81774	166064
Neelum	3245	2478	5723	62098	57891	119989	65343	60369	125712
Mirpur	60610	55031	115641	109684	108157	217841	170294	163188	333482
Bhimber	8385	7759	16144	142512	142977	285489	150897	150736	301633
Kotli	24400	21552	45992	251455	265687	517142	275855	287239	563134
Poonch	27626	26477	54103	180209	176723	356932	207835	203200	411035
Bagh	9716	9170	18886	128366	134469	262835	138082	143639	281721
Haveli	1588	1429	3017	58258	50419	108677	59846	51848	111694
Sudhnuti	8393	8013	16406	99724	107961	207685	108117	115974	224091
G.total	196422	175552	372014	1298777	1301650	2600527	1495199	1477202	2972523

Source: 1998 Census.

District /Sex Wise Urban Rural Projected Population 2011

District	Urban			Rural			G.Total		
	Male	Female	Total	Male	Female	Total	Male	Female	Total
M.abad	0.067	0.055	0.122	0.269	0.259	0.528	0.336	0.314	0.650
Hattian	0.008	0.008	0.015	0.113	0.109	0.223	0.121	0.117	0.238
Neelum	0.005	0.004	0.008	0.089	0.083	0.172	0.094	0.086	0.180
Mirpur	0.079	0.072	0.151	0.144	0.142	0.285	0.223	0.214	0.436
Bhimber	0.012	0.011	0.023	0.199	0.200	0.399	0.211	0.210	0.421
Kotli	0.034	0.030	0.064	0.351	0.370	0.721	0.385	0.401	0.785
Poonch	0.037	0.035	0.072	0.240	0.236	0.476	0.277	0.271	0.548
Bagh	0.013	0.012	0.024	0.166	0.174	0.340	0.179	0.186	0.364
Haveli	0.002	0.002	0.004	0.075	0.065	0.141	0.077	0.067	0.144
Sudhnuti	0.011	0.010	0.021	0.129	0.139	0.268	0.140	0.150	0.290
G.total	0.267	0.238	0.505	1.774	1.777	3.552	2.041	2.016	4.057



District /Sex Wise Urban Rural Projected Population

Source: 1998 Census

Population Features 2011

Projected population of AJK. (2011)	4.059
Male population. (2011)	2.050 Million
Female population. (2011)	2.009 Million
Sex Ratio (Number of males per 100 females)	101
Average Family Size.	6.7 Members. (MICS2007-08)
Urban-Rural Ratio	12 : 88 “
Growth Rate	2.41 % “
Population Density 1998 Census.	258 Persons/Sq. Km.
“ “ 2011 projected	305 Persons/Sq. Km. “
Literacy Rate	
▪ Above 10 year (MICS 2007-08)	64 %
▪ Above 15 year (MICS 2007-08)	60 %
Religion	Almost 100% Muslims

*Projected on the basis of 1998 census
 Source: Population Census Organization - Islamabad.

Administrative Set Up 2011

Divisions	03
Districts	10
Sub Divisions	30
Thana / Police Stations	43
Development Authority	05
Markaz Council	31
Dehs Village	1654
Municipal Committees	11
Municipal Corporation	02
Union Councils	189

Sources:-Board of Revenue, Muzaffarabad.

Divisions, Districts & Sub Divisions of AJ&K 2011		
Division	District	Subdivision
Muzaffarabad	Muzaffarabad	<ul style="list-style-type: none"> • Muzaffarabad • Patika(Naseerabad)
	Neelum	<ul style="list-style-type: none"> • Athmaqam • Sharda
	Hattian	<ul style="list-style-type: none"> • Hattian Bala • Leepa • Chikar
Poonch	Bagh	<ul style="list-style-type: none"> • Bagh • Dhirkot • Harigahal
	Haveli	<ul style="list-style-type: none"> • Haveli • Khurshidabad
	Poonch	<ul style="list-style-type: none"> • Rawalakot • Hajira • Thorar • Abbaspur
	Sudhnoti	<ul style="list-style-type: none"> • Pallandri • Tararkhal • Mang • Baloch
Mirpur	Mirpur	<ul style="list-style-type: none"> • Mirpur • Dadyal
	Kotli	<ul style="list-style-type: none"> • Kotli • Khoi Rata • Fatehpur • Sahensa • CharhoiS
	Bhimber	<ul style="list-style-type: none"> • Bhimber • Samahni • Barnala

Sources:-Board of Revenue, Muzaffarabad.

AJK District, Subdivision, Union Councils & Villages 2011

District	Subdivisions	Union councils	Villages
Muzaffarabad	2	25	385
Hattian	3	13	153
Neelum	2	09	84
Bagh	3	19	106
Haveli	2	08	90
Poonch	4	25	115
Sudhnuti	4	12	60
Kotli	5	38	227
Mirpur	2	22	227
Bhimber	3	18	207
AJK	30	189	1654

Sources:-Board of Revenue, Muzaffarabad.

Agriculture in AJ&K 2011

Land Holdings Area in Hectares & Acres		
	Hectares	Acres
1. Total Farm Area	632414	1562758
Farm Area per Family	2.21	5.46
Farm Area Per Capita	0.26	0.657
2. Area Under Cultivation	193984	479354
Cultivated Area Per Family	0.65	1.61
Cultivated Area Per Capita	0.07	0.19
3. Annual Cropped Area	250245	618381
Non-irrigated Area	180615	446317
Irrigated Area	11687	28881
Area Under Maize Cultivation	107298	265146
Area Under wheat “	85430	211108
Area Under Rice “	3436	8490
Area Under Jawar “	79	195
Area Under Vegetables “	2562	6330
Area Under Fruits “	13047	32240

Agriculture Land Holdings District Wise 2011

District	Unit	Total Farm Area	Farm Area per Family	Farm Area per Capita
Muzaffarabad	Hectares	85446	2.37	0.28
	Acres	211146	5.86	0.69
Hattian	Hectares	34124	1.35	0.16
	Acres	84323	3.34	0.39
Neelum	Hectares	22372	1.80	0.21
	Acres	55284	4.45	0.52
Mirpur	Hectares	85265	4.53	0.59
	Acres	210698	11.20	1.47
Bhimber	Hectares	122468	3.96	0.47
	Acres	302630	9.79	1.17
Kotli	Hectares	97112	1.67	0.19
	Acres	239974	4.14	0.49
Poonch	Hectares	58004	1.47	0.18
	Acres	143334	3.65	0.44
Bagh	Hectares	49663	1.82	0.21
	Acres	122723	4.50	0.52
Haveli	Hectares	36050	2.00	0.23
	Acres	89084	4.95	0.58
Sudhnoti	Hectares	41909	2.04	0.26
	Acres	103561	5.06	0.65
TOTAL	Hectares	632414	2.21	0.26
	Acres	1562758	5.46	0.65

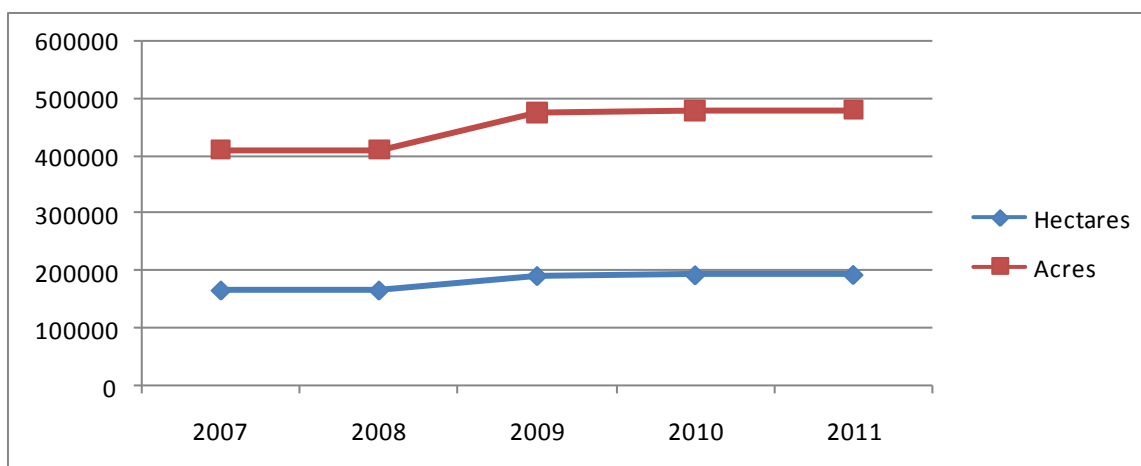
Source: Agriculture Department Muzaffarabad.

Area under Cultivation 2011

District	Unit	Area under Cultivation	Cultivated Area per Family	Cultivated Area per Capita
Muzaffarabad	Hectares	28522	0.79	0.09
	Acres	70480	1.95	0.23
Hattian bala	Hectares	11791	0.46	0.05
	Acres	29137	1.15	0.13
Neelum	Hectares	7507	0.60	0.07
	Acres	18551	1.48	0.17
Mirpur	Hectares	22025	0.93	0.12
	Acres	54427	2.31	0.30
Bhimber	Hectares	35983	1.10	0.13
	Acres	88917	2.73	0.32
Kotli	Hectares	33788	0.57	0.06
	Acres	83493	1.41	0.16
Poonch	Hectares	20740	0.52	0.06
	Acres	51250	1.29	0.15
Bagh	Hectares	14823	0.54	0.06
	Acres	36628	1.34	0.15
Haveli	Hectares	5473	0.30	0.03
	Acres	13524	0.75	0.08
Sudhnoti	Hectares	13334	0.65	0.08
	Acres	32949	1.60	0.20
Total	Hectares	193984	0.65	0.07
	Acres	479354	1.61	0.19

Area under Cultivation

Years		2007	2008	2009	2010	2011
Area Under Cultivation	Hectares	166433	166433	192041	193456	193984
	Acres	411256	411256	474535	478031	479354



Source: Agriculture Department Muzaffarabad.

Annual Cropped Area Azad Jammu & Kashmir 2011

District	Unit	ANNUAL CROPPED AREA	Non-irrigated Area	Irrigated Area	Area Under Maize Cultivation	Area Under wheat	Area Under Rice	Area Under Jawar	Area Under Gram	Area Under Vegetables
Muzaffarabad	Hectares	33182	25873	2187	27055	4898	622	-	-	527
	Acres	81996	63934	5405	66855	12103	1536	-	-	1303
Hattian	Hectares	13541	10746	923	10701	1869	516	-	-	293
	Acres	33460	26555	2280	26442	4618	1275	-	-	724
Neelum	Hectares	7808	3372	4091	5187	208	10	-	-	414
	Acres	19294	8332	10110	12818	515	24	-	-	1023
Bagh	Hectares	18893	14454	357	9034	4860	51	-	-	182
	Acres	46686	35718	883	22323	12009	126	-	-	449
Haveli	Hectares	6869	5443	12	4259	318	9	-	-	351
	Acres	16974	13449	29	105524	785	22	-	-	867
Poonch	Hectares	21171	20248	492	10968	5086	58	-	-	277
	Acres	52316	50036	1217	27102	12567	143	-	-	684
Sudhnoti	Hectares	16756	13157	175	7413	5000	-	-	-	35
	Acres	41407	32512	432	18317	12355	-	-	-	87
Kotli	Hectares	54014	32998	824	25965	22976	342	31	42	261
	Acres	133475	81541	2036	64161	56775	845	76	103	645
Mirpur	Hectares	27475	20999	1004	1339	15661	784	41	6970	89
	Acres	67894	51891	2481	3309	38699	1937	102	17223	220
Bhimber	Hectares	50535	33325	1622	5381	24557	1046	7	16943	133
	Acres	124878	82350	4009	13296	60682	2584	16	41867	329
Total	Hectares	250245	180615	11687	107299	85431	3436	79	23989	2562
	Acres	618381	446317	28881	26514	211108	8490	195	59280	6330

Agriculture Statistics 2011

Estimated % of House –hold with Farm	86%
Average Farm size (Total Farm Area/No. of Farms)	5.46
Total Farm Families	297075
Total Farm Population	2501205
Plant Protection Coverage	1020 (hec)

Major Crops & Fruits 2011

Major	Maize, Wheat, Rice
Minor	Jawar, Millet
Vegetable	Tomato, Beans, Spinach, Turnip, Karam, Potato
Fruit	Apple, Walnut, Apricot, Plump, Cherry

Farm Machinery in Usage (Public Sector)

Major Items	Government	Private	Total
Tractor	31	3090	3121
Bulldozers	7	9	16
Threshers	28	1096	1124
Maize Sheller	2	160	162
Tube wells /Lift Pumps	25	1029	1054

Major Crops Production for 2010-11

(Metric Tons)

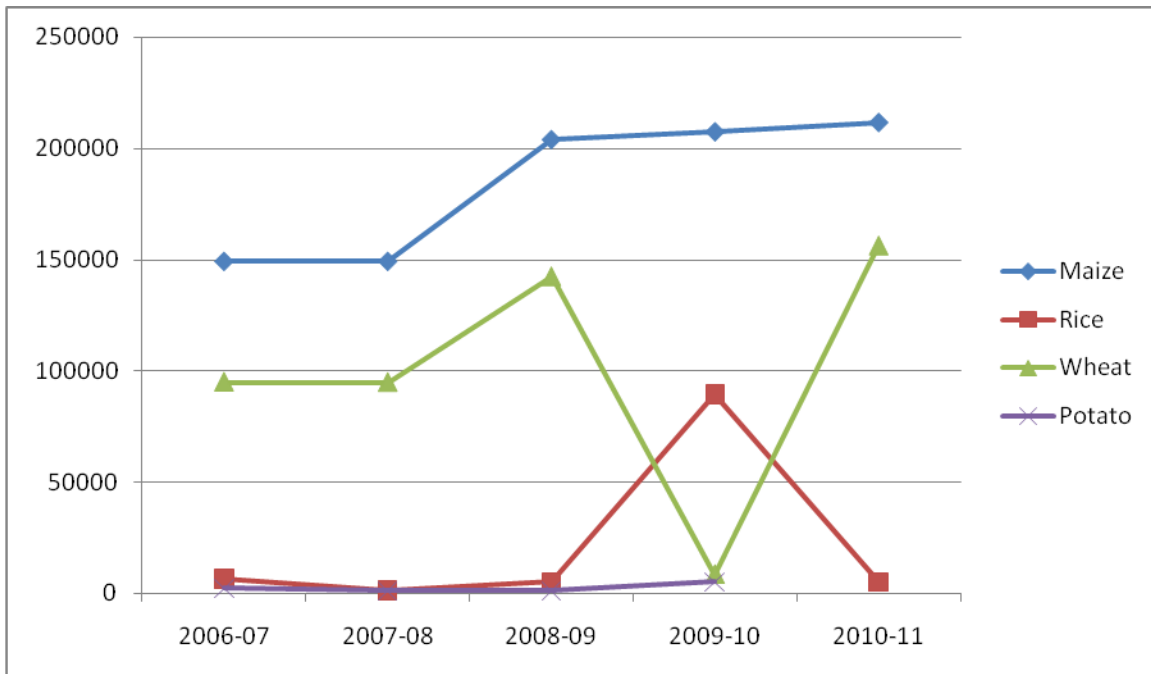
S.#	Name	Quantity
1	Maize	211552
2	Wheat	156225
3	Paddy	8522
4	Rice	5113
5	Bajra	30124

Source: Agriculture Department Muzaffarabad.

Major Crops Production

(In. Metric ton)

Major Crops Production	2006-07	2007-08	2008-09	2009-10	2010-11
Maize	149161	149161	203878	207341	211552
Rice	6501	1189	5177	89611	5113
Wheat	95000	94853	142400	8522	156225
Potato	2435	1140	1120	5113	



Livestock Population and Domestic Poultry Birds by Administrative Units 2011

Administration Unit	Number of Animals/Poultry Birds								
	Cattle	Buffaloes	Sheep	Goats	Camels	Horses	Mules	Asses	Poultry
State									
A J& K	551782	620566	230892	1487494	623	10582	5654	58234	4213062
Districts									
Muzaffarabad/ Hattian	189909	101325	64925	291654	-	5005	2894	12694	995690
Neelum	46731	1215	48700	61874	-	3298	1644	1052	158285
Mirpur	32656	58183	5828	130911	136	881	123	10506	258957
Bhimber	68450	84205	5474	226650	220	318	39	10140	373820
Kotli	83934	169208	34332	398591	267	361	90	20290	808900
Bagh / Haveli	57758	73620	26283	109819	-	351	438	651	475460
Poonch	31932	81736	30996	137329	-	182	290	1356	662960
Sudhnoti	40412	51074	14354	130666	-	186	136	1545	478990

Livestock Poultry Production for 2011

S #	Name	Quantity
1	Milk (Thousand Liter/day)	2708.6
2	Meat (Million Kg)	611.652
3	Eggs (Million)	260.836

VETERINARY FACILITIES 2011

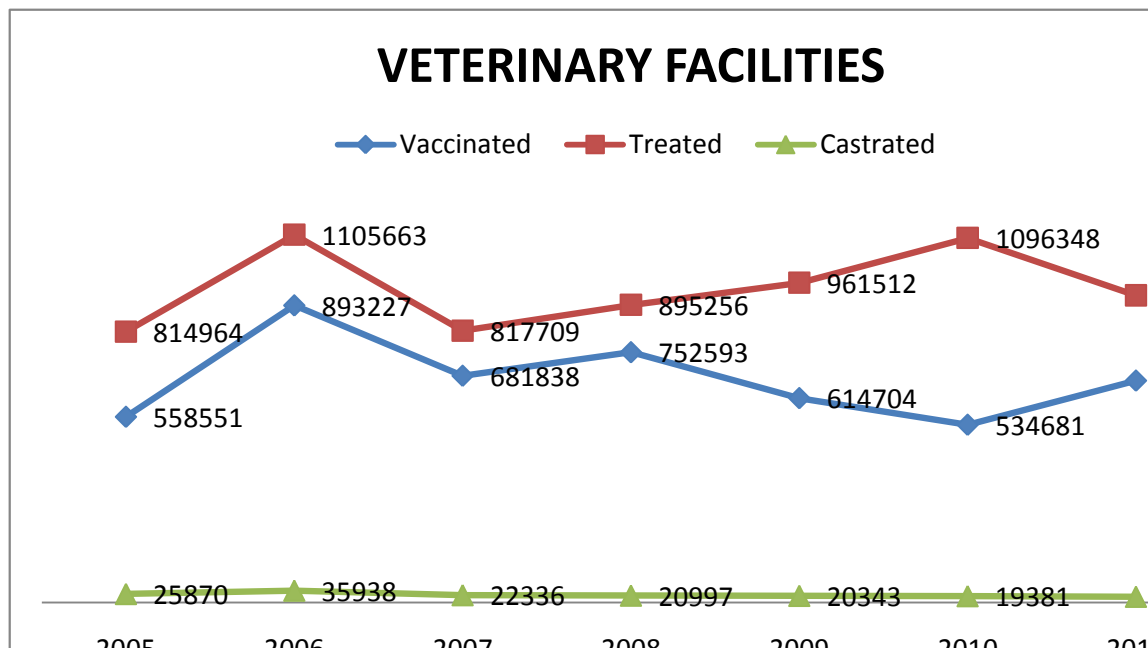
Districts	MZD	Hattian	Neelum	Mirpur	Kotli	Bhimber	Sudhnoti	Poonch	Bagh	Haveli	Total
	Veterinary Hospital	3	-	1	3	3	2	1	2	2	-
Vet. Dispensaries A-(Class)	4	4	4	4	8	6	3	3	5	1	42
Vet. Dispensaries B-(Class)	12	3	3	9	15	7	4	5	5	3	66
Veterinary First Aid Center	13	13	5	14	26	13	8	19	11	8	130
Tehsil Level Extension Centers	1	1	1	2	4	2	1	2	2	1	17
Poultry Centers	20	10	6	20	27	16	10	19	17	7	152
Artificial Insemination Center	8	4	1	9	11	14	5	5	9	2	68
Disease Investigation Center	2	-	-	1	1	-	-	1	1	-	6

Source:-Live stock Department, Muzaffarabad

Animals Vaccinated, Treated and Castrated in AJK 2011

Year	Vaccinated	Treated	Castrated
2005	558551	814964	25870
2006	893227	1105663	35938
2007	681838	817709	22336
2008	752593	895256	20997
2009	614704	961512	20343
2010	534681	1096348	19381
2011	667350	923897	17565

Source:-Live stock Department, Muzaffarabad



Education 2011

AJK University Enrolment (Muzaffarabad Campus)

Department	Ph.D		M.Phil/M.S /LLM		M.Sc/M.A/ M.B.A		B.Sc(Hon.) /BCS/SE		Total		G.Total
	Male	Female	Male	Female	Male	Female	Male	Female	Male	Female	
Statistics	0	0	0	0	17	61	0	0	17	61	78
Mathematics	0	0	8	9	63	67	0	0	71	76	147
Botany	9	2	20	15	16	114	0	0	45	131	176
Chemistry	7	6	9	13	44	95	0	0	60	114	174
Physics	1	0	10	4	88	43	0	0	99	47	146
Zoology	4	2	5	6	25	106	0	0	34	114	148
CS&IT	0	0	6	4	42	26	134	97	182	127	309
Geology	0	0	43	1	0	0	818	15	861	16	877
Art & Design	0	0	0	0	0	0	41	13	41	13	54
Education	0	0	0	0	0	0	18	21	18	21	39
Law	0	0	25	2	0	0	185	27	210	29	239
Economics	0	2	3	13	30	75	0	0	33	90	123
English	11	4	13	14	39	62	0	0	63	80	143
Sociology	0	0	0	0	34	62	0	0	34	62	96
Kashmir Studies	0	0	0	0	33	23	0	0	33	23	56
Business Administration	0	0	0	0	37	13	35	6	72	19	91
Total	32	16	142	81	468	747	1231	179	1873	1023	2896

Source: AJ&K University, Muzaffarabad

AJK University Enrolment (Rawalakot Campus)

Departments	B.Sc		M.Sc(Hons)		M.Sc/MBA		Ph.D		Total		G.Total
	Male	Female	Male	Female	Male	Female	Male	Female	Male	Female	
Agronomy	6	4	3	2	-	-	1	-	10	6	16
Entomology	33	12	11	19	-	-	--	2	44	33	77
Soil & Environmental Sciences	19	9	10	10	-	-	2	1	31	20	51
PB&MG	21	20	5	3	-	-	6	2	32	25	57
DVM	342	50		-	-	-	-	-	342	50	392
BEMS	22	29		-	-	-	-	-	22	29	51
Horticulture	32	9	30	6	-	-	4	-	66	15	81
Food Technology	16	23	12	-	-	-	-	3	28	26	54
CS&IT	38	24		-	-	-	-	-	38	24	62
Business Administration	-	-	-	-	12	10	-	-	12	10	22
Total	529	180	71	40	12	10	13	8	625	238	863

Source: AJ&K University, Muzaffarabad

AJK University Enrolment (Kotli Campus)

Department	B.Sc		M.Sc/M.B.A		M.Phil		Ph.D		Total		G.Total
	Male	Female	Male	Female	Male	Female	Male	Female	Male	Female	
Business Administration	211	67	89	19	21	10	1	2	322	98	420
Commerce	13	8	76	13					89	21	110
Public Administration			184	47					184	47	231
HRM	49	33							49	33	82
CS&IT	276	85							276	85	361
Total	549	193	349	79	21	10	1	2	920	284	1204

Staff Position

a) Faculty of Science, Muzaffarabad.

Name of Faculties	Staff Position										Total
	Professor		Associate Professor		Asstt. Professor		Lecturers		Non Teaching Staff		
	M	F	M	F	M	F	M	F	M	F	
Statistics	0	0	0	0	1	0	1	1	3	1	7
Mathematics	0	0	0	0	5	0	1	2	6	1	15
Chemistry	3	0	1	0	1	2	3	2	10	1	23
Physics	1	0	0	0	4	2	5	1	11	0	24
Geology	5	0	2	0	6	0	1	2	20	0	36
Botany	3	0	2	0	0	3	2	1	9	0	20
Zoology	2	0	2	0	1	1	1	2	10	0	19
Computer Science & IT	0	0	1	0	4	2	6	6	15	2	36
Economics	0	0	1	0	0	0	4	5	6	1	18
English	0	0	0	0	1	0	2	3	3	1	12
Art & Design	0	0	0	0	0	2	2	4	6	6	20
Law	0	0	1	0	0	0	2	1	4	0	8
Kashmiriat	0	0	0	0	1	0	3	2	0	0	6
Education	0	0	0	0	0	0	2	4	1	0	7
Total:(A)	14	0	10	0	24	12	35	36	104	13	251

B. Faculty of Agriculture Rawalakot

Department Of Vetnary Medicine (DVM)	2	0	0	0	0	0	4	0	5	0	11
Bachelors of Eastern Medicines(BEMS)	0	0	0	0	0	0	3	0	1	0	4
Computer	0	0	0	0	1	0	4	0	9	0	14
Horticulture	3	0	2	0	0	0	2	1	3	0	11
Plant Breeding & Molecular Genetics (PB & MG)	3	0	1	0	1	0	2	1	3	0	11
Entomology & Plant Pathology	4	0	1	0	0	0	2	1	3	0	11
Soil & Environmental Sciences	1	0	0	0	2	0	2	2	4	0	11
Agronomy	2	0	0	0	2	0	2	0	3	0	9
Food Technology	0	0	2	0	2	0	2	0	2	0	8
Agri Economics	0	0	0	0	0	0	1	1	0	0	2
Allied Subjects	1	0	1	0	1	0	1	4	1	0	9
Total:(B)	16	0	7	0	9	0	25	10	34	0	101

Source: AJ&K University, Muzaffarabad

Name of Faculties	Staff Position										Total
	Professor		Associate Professor		Asstt. Professor		Lecturers		Non Teaching Staff		
	M	F	M	F	M	F	M	F	M	F	

C. Faculty of Administrative Science Kotli

Masters of Business Administration(MBA)	2	0	1	0	10	2	4	3	64	3	89
Masters of Public Administration(MPA)	0	0	0	0	2	0	2	3	0	0	7
Masters of Commerce's(M.COM)	0	0	0	0	1	0	3	0	6	0	10
Bachelors of Commerce's (B.COM)	0	0	0	0	0	0	0	0	0	0	0
Bachelors of Business Administration, (BBA)	2	0	1	0	10	2	4	3	0	0	22
Bachelors of Computer Science, BS(CS)	0	0	0	0	0	0	3	1	0	0	4
Bachelor of Information Technology, BS (IT)	0	0	0	0	1	0	4	4	0	0	9
Total:(C)	4	0	2	0	24	4	20	14	70	3	141
G. Total; (A+B+C)	37	0	19	0	57	16	80	60	208	16	493

Source: AJ&K University, Muzaffarabad

**Mirpur University of Science and Technology (MUST)
2011**

Name of Faculties	Number of Students										
	B.A/L.L.B		B.Sc		B.A/B.Sc Hons		M.A/M.Sc./MBA		M.Phil		Total
	M	F	M	F	M	F	M	F	M	F	
A. Main Campus											
Electrical Engineering		-	369	33	-	-	101	2	0	0	505
Mechanical Engineering		-	281	9	-	-	20	1	0	0	311
Computer Sys. Engg.		-	202	62	-	-	0	0	0	0	264
Civil Engineering		-	237	4	-	-	0	0	0	0	241
Software Engineering		-	416	12	-	-	0	0	0	0	428
CS&IT		-	364	121	-	-	30	21	0	0	536
Physics		-	0		-	-	73	54	8	0	135
Chemistry		-	-		-	-	23	71	0	0	94
Mathematics		-	-		-	-	21	25	8	7	61
Zoology		-	-		-	-	12	79	0	0	91
Bio Technology		-	-		-	-	0	0	14	11	25
Home Economics		-	-		-	114	0	5	0	0	119
Islamic Studies		-	-		-	-	2	51	1	6	60
Art & Design	8	1	-		-	-	10	30	0	0	49
Education (B.Ed.)	29		-		-	-	6	8	0	0	43
Business & Management Studies			-		70	12	84	27	0	0	193
Law	27		-		-	-	-	-	0	0	27
B. Bhimber Campus											
Botany			0	-		-	14	72	0	0	86
Economics			0	-		-	27	47	0	0	74
English			0	-		-	15	50	0	0	65
Grand Total	64	1	1869	241	70	126	438	543	31	24	3407

Source:-Mirpur University of Science and Technology (MUST)

Name of Faculties	Staff Position												Total
	Professor		Associate Professor		Assistant Professor		Lecturer		Research Associate		Non Teaching Staff		
	M	F	M	F	M	F	M	F	M	F	M	F	
Faculty of Engineering	3	0	3	0	13	0	16	0	10	0	44	0	89
Faculty of Science	4	1	4	0	7	0	13	10	2	6	14	1	62
Faculty of Arts	0	0	2	2	10	6	3	16	0	3	19	7	68
G. Total	7	1	9	2	30	6	32	26	12	9	77	8	219

Source:-Mirpur University of Science and Technology (MUST)

District Wise Number of Government Institutions By Level (Year 2010-11)															
S.No	District	Schools								Colleges					Total
		Mosque	Primary	Middle	High	Higher Secondary	Village Workshop	Literacy Centre	Industrial	Intermediate	Degree	Post Graduate	College of Education	Poly Technique	
1	Bagh	137	216	154	81	10	-	-	-	11	2	2	1	-	614
2	Bhimber	201	236	109	64	5	1	1	-	11	6	1	-	-	635
2	Hatian	86	188	62	35	2	1	1	-	5	4	-	-	-	384
3	Haveli	40	147	35	28	1	-	-	-	1	2	-	-	-	254
4	Kotli	216	534	164	110	6	1	-	2	18	9	2	-	-	1062
5	Mirpur	151	257	94	84	4	2	-	1	10	11	1	1	-	616
6	Mzd.	184	457	129	105	11	2	1	-	7	5	2	-	-	903
7	Neelum	78	136	32	28	1	-	1	-	6	2	-	-	-	284
8	Poonch	148	408	160	97	10	2	-	2	13	6	2	-	-	848
9	Sudhnoti	131	220	80	49	1	1	-	-	9	2	2	-	-	495
Total		1372	2799	1019	681	51	10	4	5	91	49	12	2	-	6095

Source: Directorate of Educational Management Information System AJ&K Muzaffarabad.

Student Class Wise Enrolment for the Year 2010-11

District	Gender	Primary(05-09Year)						Middle(10-12 Year)				High(13-14)Year			G. Total
		1 Class	2 Class	3 Class	4 Class	5 Class	Total	6 Class	7 Class	8 Class	Total	9 Class	10 Class	Total	
Bagh	Female	2102	2051	2048	2273	2144	10618	1824	1757	1711	5292	1096	987	2083	17993
	Male	2589	2603	2821	2971	3243	14227	2386	2091	2281	6758	1947	1668	3615	24600
Bhimber	Female	1952	1911	1970	2128	2087	10048	1833	1669	1541	5043	938	795	1733	16824
	Male	2490	2417	2592	2904	2857	13260	1968	1968	1750	5686	1074	935	2009	20955
Hattian	Female	1350	1334	1360	1161	1256	6461	573	609	692	1874	240	159	399	8734
	Male	2240	1368	2361	1998	3337	11194	1294	1313	1477	4084	785	552	1337	16615
Haveli	Female	1343	3338	1079	1123	1233	5896	518	491	272	1281	280	224	474	7651
	Male	1438	1352	1370	1396	1397	6953	1081	964	638	2683	887	696	1583	11219
Kotli	Female	3648	3716	3539	3804	3967	18674	3257	2871	2545	8673	1686	1336	3022	30369
	Male	5765	5567	5562	6085	5826	28805	3875	3638	3501	11014	2310	1811	4121	43940
Mirpur	Female	2317	2242	2501	2664	2485	12209	2446	2230	2160	6836	1783	1400	3183	22228
	Male	2026	2146	2170	2333	2320	10995	1842	1759	1763	5364	1422	1167	2589	18948
Mzd.	Female	3800	3460	3513	3335	3275	17383	1750	1790	1688	5008	1208	993	2201	24812
	Male	3919	3936	4210	4167	4361	20593	2850	3092	3464	9406	2786	1748	4534	34533
Neelum	Female	898	940	945	968	838	4589	428	296	385	1109	181	154	335	6033
	Male	1817	1974	2095	1991	1911	9788	1194	1136	1223	3553	751	732	1483	14824
Poonch	Female	2724	2798	2818	2881	2633	13854	1883	1859	1803	5545	1133	934	2067	21466
	Male	2479	2569	2766	2900	2990	13704	2125	2166	2044	6335	1379	1177	2556	22595
Sudhnoti	Female	1515	1558	1525	1672	1766	8036	1520	1385	1191	4096	839	769	1608	13740
	Male	1703	1733	1788	2127	2127	9404	1901	1682	1811	5394	1196	1021	2217	17015
Total	Female	21649	21128	21298	21684	21684	107768	16032	14957	13988	44977	9354	7751	17105	169850
	Male	26466	26665	27735	138923	29259	138923	20516	19809	19952	60277	14537	11507	26044	225244

Source: Directorate of Educational Management Information System AJ&K Muzaffarabad.

District Wise Number of Teachers of Govt. Schools of AJK for the Year (2010-11).

Designation	Gender	Bagh	Bhimber	Hattian	Haveli	Kotli	Mirpur	Mzd	Neelum	Poonch	Sudhnoti.	Total
Primary Teacher	Female	759	634	373	231	1107	726	976	232	1126	586	6750
	Male	855	813	543	333	1442	776	1272	414	994	606	8048
	Total	1614	1447	916	564	2549	1502	2248	646	2120	1192	14798
Junior Teacher	Female	418	338	125	75	490	379	403	67	540	219	3083
	Male	534	419	287	182	767	456	717	177	646	322	4507
	Total	952	757	412	257	1257	835	1147	244	1188	541	7590
Senior Teacher	Female	264	206	76	50	291	255	306	51	306	142	1947
	Male	298	226	169	106	409	278	410	109	374	173	2552
	Total	562	432	245	156	700	533	716	160	680	315	4499
G. Total		3128	2636	1573	977	4506	2870	4111	1050	3988	2048	26887

Source: Directorate of Educational Management Information System AJ&K Muzaffarabad.

Student Class Wise Enrolment for the Year (2010-11)

District	Gender	Un-admitted	Kachi	Class-1	Class-2	Class-3	Class-4	Class-5	Class-6	Class-7	Class-8	Class-9	Class-10	Total
Bagh	Female	1962	3295	2102	2051	2048	2273	2144	1824	1757	1711	1096	978	23250
	Male	3080	4222	2589	2603	2821	2971	3243	2386	2091	2281	1947	1668	31902
Bhimber	Female	834	3357	1952	1911	1970	2128	2087	1833	1669	1541	938	795	21015
	Male	1917	4364	2490	2417	2592	2904	2857	1968	1968	1750	1074	935	27236
Hattian	Female	1433	2053	1350	1334	1360	1161	1256	573	609	692	240	159	13330
	Male	2903	3209	2240	2368	2361	1998	2227	1294	1313	1477	785	552	22727
Haveli	Female	265	2822	1343	1118	1079	1123	1233	518	491	272	250	224	10738
	Male	1405	2399	1438	1352	1370	1396	1397	1081	964	638	887	696	15023
Kotli	Female	3772	6032	3648	3716	3539	3804	3967	3257	2871	2545	1686	1336	40173
	Male	7104	9182	5765	5567	5560	6085	5826	3875	3638	3501	2310	1811	60226
Mirpur	Female	645	3110	2317	2242	2501	2664	2485	2446	2230	2160	1783	1400	25983
	Male	1360	3201	2026	2146	2170	2333	2320	1842	1759	1763	1422	1167	23509
Muzaffarabad	Female	1633	6523	3800	3460	3513	3335	3275	1750	1790	1688	1208	993	32968
	Male	4847	6305	3919	3936	4210	4167	4361	2850	3092	3464	2786	1748	45685
Neelum	Female	1019	1005	898	940	945	968	638	428	296	385	181	154	8057
	Male	2959	2158	1817	1974	2095	1991	1911	1194	1136	1223	751	732	19941
Poonch	Female	2798	4237	2724	2798	2818	2881	2633	1883	1859	1803	1133	934	28501
	Male	2928	4392	2479	2569	2766	2900	2990	2125	2166	2044	1379	1177	29915
Sudhnoti	Female	1849	1997	1515	1558	1525	1672	1766	1520	1385	1191	839	769	17586
	Male	1806	2557	1703	1733	1788	2053	2127	1901	1682	1811	1196	1021	21378
Total	Female	16210	34431	21649	21128	21298	22009	21684	16032	14957	13988	9354	7751	220491
	Male	30309	41989	26466	26665	27735	28798	29259	20516	19809	19952	14573	11507	297452

Source: Directorate of Educational Management Information System AJ&K Muzaffarabad.

Forest 2011				
Total Geographical Area:		1.330 Million Hectares		
		3.286 Million Acres		
General Distribution of Land Utilization				
Land Utilization	Area (Million)		% of	
	Hec.	Acre	FDA*	TGA**
A) Area Controlled By Deptt. of Forest	0.567	1.400	100.0	42.60
1) Area Under Productive Forests	0.379	0.936	66.8	28.5
i. Area under Actual Forest				
◆ Area Under Deodar	0.018	0.044	3.1	1.3
◆ Area Under Kail	0.036	0.090	6.4	2.7
◆ Area Under Fir	0.042	0.103	7.4	3.2
◆ Area Under Pine	0.057	0.141	10.1	4.3
◆ Area Under Broad Leaves Trees	0.001	0.002	0.1	0.1
Sub-Total (i)	0.154	0.380	27.1	11.6
ii. Area Under Thinly wooded Forests				
2) Non Productive Area	0.188	0.464	33.2	14.1
B Area Under Cultivation	0.173	0.427	-	13.0
C Area Under Cultivable Waste	0.032	0.080	-	2.4
D Area Under Uncultivable Waste	0.0558	1.379	-	42.0
Total Geographical Area (A+B+C+D)	1.330	3.286	-	100
<u>Forest Production-</u>				
Total Annual Forest Production		654/000 Cft		
Annual Production Hectare		1.94Cft		
Per Capita Forest Area		0.38Acre		
Per Capita Standing Volume		330Cft		
Per Capita Timber (Yield)		1.82Cft		

Area by District and under the Control of AJK Forest Department 2011

District	Coniferous	Irrigated Plantation	Reverian Bela Forest	Scrub Forest	Coastal Forest	Range Lands	Total
IN AJK	1.007	-	-	0.023	-	0.370	1.400
Muzaffarabad	0.109	-	-	0.001	-	0.012	0.122
Neelum	0.360	-	-	-	-	0.317	0.677
Hattian	0.088	-	-	-	-	0.008	0.096
Bagh	0.078	-	-	0.003	-	0.018	0.099
Havali	0.056	-	-	0.002	-	0.012	0.070
Poonch	0.050	-	-	0.003	-	0.003	0.056
Sudhnoti	0.048	-	-	0.004	-	-	0.052
Mirpur	0.001	-	-	0.005	-	-	0.006
Kotli	0.158	-	-	0.001	-	-	0.159
Bhimber	0.059	-	-	0.004	-	-	0.063

Source: AJ&K Forest Department, Muzaffarabad

District Wise List of Forest Rest Houses in AJK

S. #	District	Forest Rest Houses	Status
1	Muzaffarabad	1. Rest House Danna	Damaged during earthquake
2	Hattian	1. Rest House Dingian, Chikar 2. Rest House Leepa 3. Rest House Daokhan 4. Rest House Noon Bagla, Chikar	Damaged during earthquake = = = = = = = = =
3	Neelum	1. Rest House Keran 2. Rest House Dawarian 3. Rest House Thonian 4. Rest House Kutton 5. Rest House Halmat 6. Rest House Kel 7. Rest House Sharda	Damaged during earthquake = = = = = = = = = = = = = = = = = =
4	Bagh	1. Rest House Dheerkot 2. Rest House Mahmood Gali	Working condition.
5	Haveli	1. Rest House Forward Kahutta	Damaged during earthquake
6	Sudhnuti	1. Rest House Pallandri 2. Rest House Baluch 3. Rest House Trarkhal	Is in working condition = = = = = =
7	Poonch	1. Rest House Abbaspur	Damaged during earthquake
8	Kotli	1. Rest House Sensa 2. Rest House Senah Banah 3. Rest House Mansooh 4. Rest House Choach 5. Rest House Broohian	Is in working condition = = = = = = = = = = = =
9	Mirpur	1. Rest House Mirpur	Is in working condition (Presently under use of Ehtsab. Bureau).
10	Bhimber	1. Rest House Bhimber 2. Rest House Choki (Smahni) 3. Rest House Baghsar	Is in working condition = = = = = =

Source: AJ&K Forest Department, Muzaffarabad.

Health 2011
Manpower & Statistics

Health Managers	54
Specialists	232
Medical Officers	482
Dental Surgeons	68
Nurses	349
Lady Health Visitors	221
Lady Health Worker Supervisors allocation	141
Lady Health workers allocation	3246
Dias/Midwives	89
Paramedics	2884
Hospital Beds	2249
RHC Beds	408
Population per Hospital Bed	1801
Population per Doctor	5685
Population per Dental Surgeon	59691
Bed Occupancy Rate	64%
Primary Health Cares Services.	60.5%

Source: Directorate of Health Muzaffarabad

**Number of Hospitals/BHUs/Dispensaries and Rural Health Centers with their Beds
by Government Level in AJK Districts for the Year 2011**

District	Government					
	Hospital		BHUs/Dispensaries		RHCs	
	NO.	BEDS	NO.	BEDS	NO.	BEDS
Muzaffarabad	3	550	50	0	4	48
Neelum	2	90	21	0	1	12
Hattian	1	50	16	0	3	36
Bagh	2	250	28	0	6	72
Havali	1	50	16	0	1	12
Poonch	1	250	29	0	5	60
Sudhnoti	2	114	20	0	3	36
Mirpur	2	390	38	0	4	48
Kotli	4	355	54	0	4	48
Bhimber	1	150	38	0	3	36
Total	19	2249	310	0	34	408

Source: Directorate of Health Muzaffarabad

Health 2011

Type	Mzd	Hattian	Neelum	Mirpur	Bhim	Kotli	Poonch	Haveli	Bagh	Sudh.	Total
AIMS	1	0	0	0	0	0	0	0	0	0	1
CMHs	1	0	0	0	0	0	1	0	0	0	2
DHQ Hospitals	0	0	1	1	1	1	0	0	1	1	6
THQ Hospitals	0	1	1	1	0	3	0	1	0	0	7
Civil Hospitals	0	0	0	0	0	0	0	0	0	1	1
TB General Hospital	0	0	0	0	0	0	0	0	1	0	1
Institute of Cardiology	0	0	0	1	0	0	0	0	0	0	1
Dental hospital	1	0	0	0	0	0	0	0	0	0	1
RHCs	4	3	1	4	3	4	5	1	6	3	34
BHUs	36	12	20	25	25	35	22	6	17	10	208
Dispensaries	14	4	1	11	13	14	7	10	9	10	91
FAPs	41	14	10	17	20	63	28	12	23	16	244
MCH Centers	37	11	11	24	16	36	22	4	23	13	197
TB/Leprosy Centers	8	5	4	8	6	9	6	4	10	7	67
Unani Dispensaries	2	0	0	2	0	5	0	0	2	0	11
Dental Centers	5	0	2	6	4	8	4	0	6	4	42
Teaching Inst. (Nursing Sch./Paramedics Inst.)	1	0	0	4	0	1	0	0	1	0	7
EPI Centers	55	24	20	31	40	60	38	16	33	26	343
Malaria Centers		44		28	25	27	22	32		11	189
In Service Training Centers	1	0	0	1	0	0	0	0	1	0	3

Source: Directorate of Health Muzaffarabad

Number of Doctors, Nurses, L.H.VS & Dais/Midwives by District AJK 2011													
District	Doctors			Nurses			Pharmacist	Drug Inspector		Health Education officer		L.H.V	Dias/ Mid Wives
	Male	Female	Total	Male	Female	Total		DI	CDI	HEO	ADHE		
Muzaffarabad	65	53	118	0	83	83	2	1	1	1	1	35	18
Neelum	21	2	23	0	13	13	0	1	0	0	0	11	1
Hattian	15	3	18	0	10	10	0	0	0	0	0	11	3
Bagh	48	6	54	0	31	31	1	1	0	1	0	24	4
Havali	9	0	9	0	16	16	0	0	0	0	0	11	3
Poonch	52	22	74	0	51	51	1	1	0	0	0	39	12
Sudhnoti	22	4	26	0	4	4	1	1	0	1	0	15	6
Mirpur	28	31	59	0	75	75	1	1	0	1	0	28	15
Kotli	53	14	67	0	41	41	1	1	0	1	0	30	18
Bhimber	26	8	34	0	25	25	1	1	0	5	0	17	9
Total	529	143	482	0	349	349	8	8	1	5	1	221	89

Source: Directorate of Health Muzaffarabad

**Number of Hospitals/BHUs/Dispensaries and Rural Health Centers with Their Beds by Government Level in
AJK Districts for the Year 2011**

District	Government					
	Hospital		BHUs/Dispensaries		RHCs	
	NO.	BEDS	NO.	BEDS	NO.	BEDS
Muzaffarabad	3	550	50	0	4	48
Neelum	2	90	21	0	1	12
Hattian	1	50	16	0	3	36
Bagh	2	250	28	0	6	72
Havali	1	50	16	0	1	12
Poonch	1	250	29	0	5	60
Sudhnoti	2	114	20	0	3	36
Mirpur	2	390	38	0	4	48
Kotli	4	355	54	0	4	48
Bhimber	1	150	38	0	3	36
Total	19	2249	310	0	34	408

Source: Directorate of Health Muzaffarabad

Industries & Minerals 2011

District wise Industrial units

Type	Public	Private	Total
Muzaffarabad	-	371	371
Hattian	-		
Mirpur	01	621	622
Bhimber	-	599	599
Kotli	-	276	276
Poonch	-	82	82
Bagh	-	49	49
Haveli	-		
Sudhnoti	-	28	28
Total	01	2026	2027

Type of Industry

Name	Nos.	Name	Nos	Name	Nos.
Wood Work & Furniture House	226	Tyre & Rubber Factory	-	Food Industry & Beverage	108
Flour Mills	10	Main Hotels	92	Shoe Industries	02
Paper Mills	04	Plastic industries	03	Scooter/Rickshaw (Vespa)	02
Arms Factories	43	Steel re-rolling & Furnaces	08	Cosmetics	03
Poultry Forms	775	Printing Press	35	PVC Pipe	43
Textile Mills/Weaving	12	Crush Machines	104	Ice Factory	12
Steel Works	174	RCC pipe Industries	32	Miscellaneous	47

Details of Investment

Industrial Estate	06	Industrial Unit Under Construction	182
Total Area	7546-K	Industrial Unit in Production	189
Sanctioned Investment	20000 Million	Sick Units	83
Investment Made	13000 Million	Labour Employed	13000
Sanctioned Unit	456		

Source : Directorate of Industries Muzaffarabad.

Industrial Minerals 2011

A. Major Minerals / Industrial Minerals			C. Metallic Minerals		
S.#	Name of Mineral	Reserve (In million tons)	S.#	Name of Mineral	Reserve (In million tons)
1	Dolomite	4.00	1	Gold	Under Prospection
2	Gypsum	05.00	2	Silver	Under Prospection
3	Marble	24.000	3	Copper	Nil
4	Soapstone	0.050	4	Lead Zinc	Under Prospection
5	Quartzite	2.00	5	Tungsten	Nil
6	Graphite	01.000	6	Pyrite	Under Prospection
7	Feldspar	00.100	7	Rare earth elements	Under Prospection
8	Granite	In-exhaustible	8	Bauxite	07.000
9	Fireclay	07.000	9	Limonite	00.065
10	Coal	30.000	Precious Stone		
11	Bentonite	04.000	1	Ruby	45.000 million gms
12	Pozolana	00.500	Semi Precious Stone		
13	Limestone	In-exhaustible	1	Tourmaline	It is found in abundance but technically reserves estimation is not possible.
14	Slate	01.500	2	Spessartine Garnet	Under prospection
A. Minor Minerals			3	Beryldo.....
1	Aggregate (Bajri)	Extensive		Aquamarinedo.....
2	Sand	Extensive		do.....

Source : Directorate of Industries Muzaffarabad.

**Azad Kashmir Small Industry Institutions 2011
(AKSIC)**

S#	Name of Scheme	MZD	Neelum	Bagh	Poonch	Sudh.	Kotli	Bhim.	Mirpur	Total
1	Carpet weaving Development Center	1	-	-	-	1	-	-	-	2
2	Wood Working/Carving development Center	1	1	1	1	-	1	-	-	5
3	Traditional Kashmiri Handicrafts (Shawl- Bafi) Development Center	1	-	-	-	-	-	-	-	1
4	Establishment of Solar Energy Development Center	-	-	1	--	--	1	--	1	3
Grand Total		3	1	2	1	1	2	--	1	11

Source: Directorate of Small Industries Muzaffarabad.

Districts wise Technical Education Institution AJKTEVTA 2011.

S#	Name of Institution	MZD	Hattian	Neelum	Bagh	Haveli	Poonch	Sudh,	Kotli	Bhim.	Mirpur	Total
1	Polytechnic	-	-	-	-	-	1	-	-	-		1
2	Technical training Institute	-	-	-	-	-	-	-	-	-	1	1
3	Vocational Training Institute(Male)	2	-	1	1	-	1	2	1	1	1	10
4	Vocational Youth Centers(Male)	1	-	-	1	-	-	1	1	1	-	5
5	Industrial Training Centers (Male)	-	1	1	-		-	-	-	-	-	2
6	Woman Industrial Schools (Female)	11	2	2	3	1	2	2	4	4	3	34
7	Multi Trade Centers	1	1	-	-		1	-	1	-	1	5
8	Vocational Youth Centers (Female)	1		-	-		-	-	1	-	1	4
9	Skill Development center(SDC)	18	10	3	11	3	7	3	13	8	5	81
	Grand Total	34	14	7	16	04	12	8	21	14	11	143

Source: AJKTEVTA, Muzaffarabad

Information Technology 2011

Intervention	Accumulative achievements 2011
Establishment of IT Training centers in AJK	10
Training of Govt. Employees/Youth	13558
Establishment of computer Labs in degree colleges AJK	51
Establishment of computer Labs in Inter colleges of AJK	38
Establishment of computer Labs in High/Higher Secondary schools	280
Automation of Minister Offices	25
Automation of Secretariat Departments in AJK	10
Launching of websites	02

Source : Information Technology Board Muzaffarabad.

Local govt. & Rural Development

2011

Piped Water Supply In Rural Areas

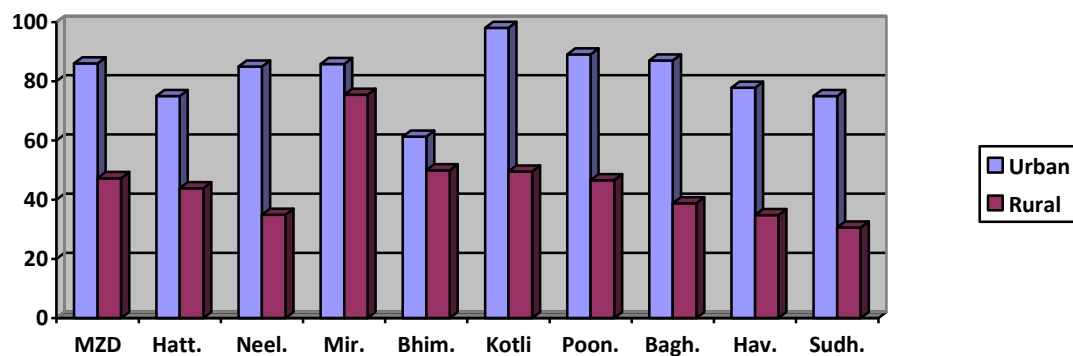
District wise	Neelum	M,abad	Hattian	Bagh	Haveli	Poonch	Sudhnoti	Kotli	Mirpur	Bhimber	Total
Villages	84	385	153	106	90	115	60	227	227	207	1654
Rural population	0.172	0.528	0.223	0.340	0.141	0.476	0.268	0.721	0.285	0.399	3.552
Piped water facilities Benefited population	0.054	0.218	0.084	0.126	0.048	0.206	0.073	0.33	0.202	0.182	1.523
Piped water facilities in %age	34.9	47.3	43.9	38.8	34.8	46.6	30.6	49.5	75.4	49.9	45.8

Physical Planning & Housing 2011

Piped Water Supply In Urban Areas

District wise	Neelum	M,abad	Hattian	Bagh	Haveli	Poonch	Sudhnoti	Kotli	Mirpur	Bhimber	Total
Urban population (in million)	0.008	0.122	0.015	0.024	0.004	0.072	0.021	0.064	0.151	0.023	0.505
House with in municipal limits (No.)	410	14948	200	1980	450	1384	600	8850	22300	3650	54772
House with Piped water facility (No.)	348	12875	150	1722	350	1233	450	8673	19136	2236	47173
Piped water facilities in %age	84.9	86	75	87	77.8	89	75	98	85.8	61.3	86

Piped Water Supply in %Age



Source:-LG&RD and PPH Department, Muzaffarabad

Power 2011
Electric Connection

S. #	District	Number of Consumers			
		Domestic	Commercial	Industrial	Total
1	Neelum	7464	652	2	8186
2	Muzaffarabad	59508	7568	168	67332
3	Hattian	22311	1304	16	23684
4	Bagh	41095	3016	48	44159
5	Haveli	5836	513	1	6350
6	Poonch	57392	5412	137	63048
7	Sudhnoti	31853	2225	45	34123
8	Kotli	79298	12616	499	92732
9	Mirpur	74638	19409	667	94833
10	Bhimber	54782	5890	389	61263
	Total	434177	58605	1972	495710

Power 2011

Power facilities	Neelum	MZD	Hattian	Bagh	Haveli	Poonch	Sudh	Kotli	Mirpur	Bhim	Total
Small Hydal Station (nos.)	4	1	3	0	0	0	0	0	0	0	8
Villages Electrified (nos.)	81	387	155	107	91	119	62	229	231	208	1670
Kilometer of HT. Line (km)	336	913	239	1564	399	1038	717	1588	1513	645	8953
Kilometer of LT. Line(km)	440	3334	2545	1311	629	1600	956	2870	2291	793	16769
Grid station (nos.)	-	4	1	2	0	2	4	3	6	1	23
Transform/sub - station (nos.)	254	1381	408	1370	278	1183	699	2149	2125	772	10619
Consumers (nos.)	8186	67332	23684	44159	6350	63048	34123	92732	94833	61263	495710
Installed Grid Capacity (MVA)	0	73	8	41	0	65	23.3	112	273	52	647.3
Per Capita Electricity Delivered(KWH)	60	330	231	226	69	224	135	364	994	366	347
Population Served (million)	0.097	0.523	0.192	0.344	0.085	0.521	0.277	0.735	0.441	0.401	3.616

Source: Directorate of Power Department, Muzaffarabad.

Postal Facilities 2011

Districts	General post offices(GPOS)	Extra departmental branch post offices	Extra departmental sub post offices	Sub post offices	Head post offices
Muzaffarabad	01	28	0	13	0
Hattian	0	09	0	06	0
Neelum	0	12	01	02	0
Sudhnoti	0	31	02	13	01
Poonch	01	0	50	19	0
Bagh	01	29	04	12	0
Haveli	0	13	0	02	0
Mirpur	02	27	0	25	0
Kotli	01	55	04	16	0
Bhimber	01	35	02	17	0
Total	07	239	63	125	01

Source: Office of the DY. GP Sector Head quarter AJ&K, MZD.

Police 2011

Territorial Hierarchy of Police Unit in Azad Kashmir

District	Sub Division	Police Station	Police Posts	Check Post
Muzaffarabad	2	7	5	3
Hattian	3	3	1	0
Neelum	2	3	3	1
Bagh	3	2	2	7
Havali	2	2	1	1
Poonch	4	5	6	5
Sudhnoti	4	4	3	0
Kotli	5	6	5	3
Mirpur	2	7	2	9
Bhimber	3	4	2	13
Total	30	43	30	42

Source: Police Department Muzaffarabad.

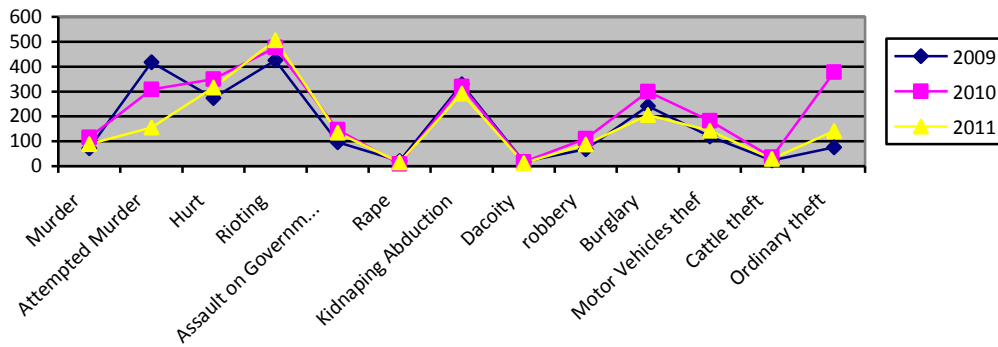
Police Crime Report 2011

Districts	All Reported	Murder	Attempted Murder	Hurt	Rioting	Assault on Government Servants	Rape	Kidnapping/ Abduction	Dacoity	Robbery	Burglary	Motor Vehicles Theft	Cattle Theft	Ordinary Thefts	MISC.
Muzaffarabad	605	9	14	17	73	12	3	62	3	11	33	33	2	22	311
Neelum	119	4	1	3	18	3	0	3	0	0	5	2	0	5	75
Hattian	106	2	0	7	17	3	0	13	0	1	6	0	1	2	54
Havali	133	2	6	2	34	11	0	8	0	2	5	0	1	1	61
Bagh	315	4	4	17	62	11	0	26	1	0	14	10	0	11	155
Poonch	861	14	27	67	68	26	1	46	1	14	50	11	3	18	335
Sudhnoti	315	4	7	16	48	7	3	22	4	7	19	6	0	4	168
Mirpur	980	13	22	57	40	22	6	40	3	24	38	60	14	34	607
Kotli	997	15	56	54	111	30	0	44	1	13	21	12	1	30	609
Bhimber	609	22	18	76	35	10	2	28	0	16	15	8	7	14	358
Total	4860	89	155	316	506	135	15	292	13	88	206	142	29	141	2733

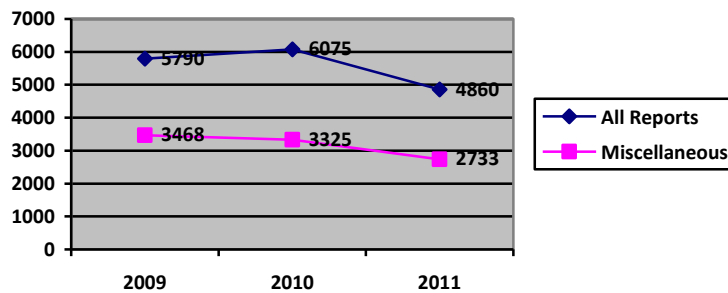
Source: Police Department Muzaffarabad.

Last 3 Year Crime Report

Year	All Reported	Murder	Attempted Murder	Hurt	Rioting	Assault on Government Servants	Rape	Kidnapping/Abduction	Dacoity	Robbery	Burglary	Motor Vehicles Theft	Cattle Theft	Ordinary Thefts	Misc.
2009	5790	72	417	274	425	96	20	329	18	68	241	120	23	76	3468
2010	6075	116	308	349	477	147	9	320	17	110	300	183	36	378	3325
2011	4860	89	155	316	506	135	15	292	13	88	206	142	29	141	2733



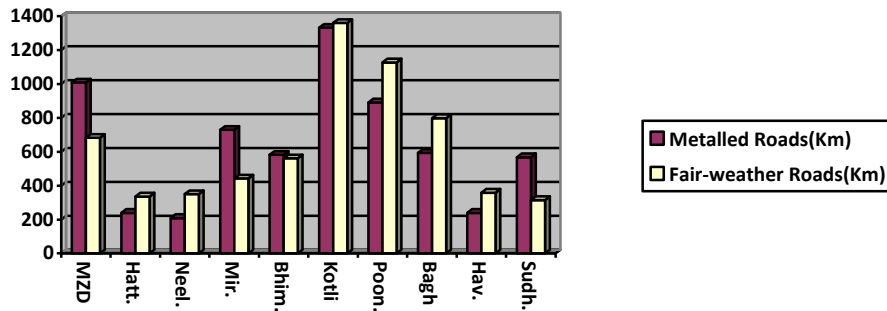
Year	All Reports	Miscellaneous
2009	5790	3468
2010	6075	3325
2011	4860	2733



Roads & Communication 2011

Total Roads in AJK	12719 km
Metalled Roads	6390 "
Fair-Weather Roads	6329 "
AJ&K Road Density	0.48 Per Sq.Km
Pakistan Road Density	0.33 "

District	(i) METALLED ROADS (KM)			(ii) Fair-Weather Roads (KM)			G.Total (i+ii) KM
	PWD	LG&RD	TOTAL	PWD	LG&RD	TOTAL	
Neelum	209	0	209	152	198	350	559
Muzaffarabad	928	81	1009	37	645	682	1691
Hattian	213	26	239	61	275	336	575
Bagh	510	83	593	106	692	798	1391
Haveli	215	24	239	119	239	358	597
Poonch	814	77	891	47	1080	1127	2018
Sudhnoti	528	40	568	0	315	315	883
Kotli	1219	112	1331	0	1360	1360	2691
Mirpur	654	75	729	0	442	442	1171
Bhimber	525	57	582	26	535	561	1143
Total	5815	575	6390	548	5781	6329	12719



Source:-LG&RD and Works Department, Muzaffarabad.

Social Welfare & Women Development Department 2011

Districts Wise Institutions

S#	Name of Institution	Mzd	Hatt	Neel.	Bagh	Hav	Poon.	Sud.	Kot	Bhim	Mir.	Total
1	Dar-ul-Falah	1	-	-	1	-	1	-	1	-	1	5
2	Rural House Hold Education Centers	1	-	-	1	-	1	-	1	-	1	5
3	Kashana at Kotli	-	-	-	-	-	-	-	1	-	-	1
4	Kashana at Bagh	-	-	-	1	-	-	-	-	-	-	1
5	Shelter Homes	1	-	-	-	-	-	-	1	-	-	2
6	Women Development Centers	4	1	-	2	1	4	1	5	1	2	21
7	Establishment of Kashana at M,abad,Rawalakot, Sudhnoti, Mirpur & Bhimber.	1	-	-	-	-	1	1	-	1	1	5
8	Establishment of employment & Development Centers in AJK	1	1	3	2	-	2	1	2	1	1	14
9	Establishment of Social Welfare Complexes at Muzaffarabad	1	-	-	-	-	-	-	-	-	-	1
10	Establishment of Shaheed Benazir Woman Development Centre Muzaffarabad	1	-	-	-	-	-	-	-	-	1	2
11	Establishment of child protection Units	1	-	1	1	-	-	-	-	-	-	3
Total		12	2	4	8	1	9	3	11	3	7	60

Source:-Social Welfare Department, Muzaffarabad.

Telecommunication 2011
District Wise Digital Exchanges

S.#	District	Exchanges	Capacity
1	Muzaffarabad	8	16920
2	Hattian	6	3264
3	Neelum	8	5266
4	Bagh	15	10160
5	Haveli	3	3180
6	Poonch (Rawalakot)	17	18488
7	Sudhnoti (Plandri)	11	7824
8	Mirpur	16	32988
9	Kotli	22	31784
10	Bhimber	6	9144
	Total	112	139018

Telecom Facilities in AJ&K- 2011

S.#	District	2011		
		Exchanges	Capacity	Working Connection
1	PSTN	122	139018	54956
2	GSM	95	400 k	330183
3	WLL	41	50000	30690
4	DXX	-	352	110
5	DSL	-	2208	1238
6	OFC (Km)	-	-	-

**AJK Tourism Department
2011**

Detail of Tourist Rest Houses /Huts/Youth Hostels/Motels.

District Neelum

S.#	Name of Lodges	Single Bedroom/Rent	Double Bedroom/Rent	Deluxe Room/Rent	Contact No's	Current Status
1	Tourist Lodges, Kutton	3 Rooms/850 Rs	4 Rooms	-	Valley Lodges: 03435800000	PPP
2	Tourist Lodge, Neelum (Keran)	-	5 Rooms/850 Rs.	1 Room/1050 Rs.	00925822921317	
3	Tourist Motels (2) Neelum (Keran)	-	14 Rooms	4 Rooms	Valley Lodges 03435800000	PPP
4	Tourist Huts (6) Upper Neelum	-	12 Rooms/750 Rs.	-	5822921317	
5	Tourist Lodge, Sharda	-	4 Rooms/850 Rs.	1 Room/1050 Rs.	Valley Lodges 03435800000	
6	Tourist Lodge, Dawarrian	-	2 Rooms	-	Valley Lodges 03435800000	PPP
7	Youth Hostel #1, Sharda	-	2 Rooms	-	Valley Lodges 03435800000	PPP
8	Youth Hostel # 2, Sharda	-	3 Rooms	-	Valley Lodges 03435800000	PPP
9	Tourist Motel, Kel	-	7 Rooms/850 Rs.	2 Rooms/1050 Rs.	05822921317	

District Muzaffarabad

S.#	Name of Lodges	Single Bedroom/Rent	Double Bedroom/Rent	Deluxe Room/Rent	Contact No's	Current Status
1	Tourist Lodge, Shaheed Gali	-	2 Rooms 850 Rs.	1 Room/1050 Rs.	05822-921317	
2	Tourist Lodge, Danna	-	2 Rooms/850 Rs.	1 Room/1050 Rs.	05822-921317	
3	Tourist Lodge, Saran	-	3 Rooms /850 Rs.	1 Room/1050 Rs.	05822-921317	
4	Tourist Lodge, Barsala	-	2 Rooms/850 Rs.	-	05822-921317	

District Bagh

1	Tourist Lodge, Shddhan Gali	-	2 Rooms 850 Rs.	1 Room/1050 Rs.	05823-920067	
2	Tourist Huts (3) Dheerkot	-	6 Rooms 850 Rs.	-	05823-920067	
3	Tourist Lodge, Neela Butt	-	2 Rooms 850 Rs.	1 Room/1050 Rs.	05823-920067	
4	Tourist Lodge, Lasdanna	-	2 Rooms 850 Rs.	1 Rooms/1050 Rs.	05823-920067	

District Poonch

S.#	Name of Lodges	Single Bedroom/Rent	Double Bedroom/Rent	Deluxe Room/Rent	Contact No's	Current Status
1	Tourist Lodge, Paniola	-	2 Rooms 850 Rs.		05824-920123	
2	Tourist Lodge, Koyian	-	2 Rooms/850 Rs.	1 Room/1050 Rs.	05824-920123	
3	Tourist Lodge, Banjosa	-	3 Rooms /850 Rs.	2 Room/1050 Rs.	05824-920123	
4	Tourist Lodge, Ghor Mar	-	2 Rooms/850 Rs.	-	05824-920123	
5	Tourist Lodge, Tatta pani	-	7 Rooms/850 Rs.	1 Room/1050 Rs.	05824-920123	

District Kotli

1	Tourist Lodge, Sarda	Null	3 Rooms 850 Rs.	1 Room/1050 Rs.	05826-920421	
2	Tourist Lodge, Teenda	-	5 Rooms 850 Rs.	1 Room/1050 Rs.	05826-920421	
3	Tourist Lodge, Fatehpur	-	4 Rooms 850 Rs.	1 Room/1050 Rs.	05826-920421	

District Mirpur

1	Tourist Hut, Mirpur	Null	2 Rooms/550 Rs.		05827-926001	
---	---------------------	------	-----------------	--	--------------	--

District Bhimber

1	Tourist Lodge, Jandi Chontra	-	2 Rooms/850 Rs.		05827-926001	
---	------------------------------	---	-----------------	--	--------------	--

Source:-AJK Tourism Department, Muzaffarabad

Transport 2011

Sr.#	District	No. of registered vehicles during July, 2010 to June 2011	Total No. of registered vehicles Up to June 2011
1.	Muzaffarabad/ Hattian	714	9768
2.	Neelum	16	16
3.	Bagh/ Haveli	45	619
4.	Poonch	109	966
5.	Sudhnoti	65	394
6.	Mirpur	3090	43506
7.	Kotli	1243	9718
8.	Bhimber	345	3109
Total		5627	68096

Source:-Commissioner Income Tax office, Mirpur.

Transport 2011

Motor Vehicles Registered by Type (July, 2010 to June, 2011)

Category	District								
	Mzd	Neelum	Kotli	Mir	Bhim.	Sud.	Poonch	Bagh	Total
Buses	8	-	-	2	-	1	-	-	11
Turks	25	-	4	35	1	-	6	4	75
Motorcars	80	-	43	223	2	1	11	-	360
Taxi/cab	-	-	27	2	-	-	-	-	29
Motor cycles/ scooters	443	10	1020	2387	324	55	47	30	4316
Rickshaws	5	-	-	327	-	-	-	-	332
Jeeps	72	4	21	9	-	2	2	5	115
Station wagon	13	2	-	2	-	-	-	3	20
Tractors	7	-	32	13	18	4	34	2	110
Delivery van	7	-	3	3	-	-	2	-	15
Government goods vehicles	-	-	-	17	-	-	-	-	17
Oil tankers water tankers	-	-	-	2	-	-	-	-	2
Pickups	54	-	93	63	-	1	7	1	219
Gas tankers	-	-	-	-	-	-	-	-	-
Ambulances	-	-	-	2	-	1	-	-	3
Cranes	-	-	-	-	-	-	-	-	-
Truck trailers	-	-	-	-	-	-	-	-	-
Dumper trucks	-	-	-	3	-	-	-	-	3
Total	714	16	1243	3090	345	65	109	45	5627

Source:-Commissioner Income Tax office, Mirpur.

Development Outlays
(1955-2012)
Allocation and Utilization

Million Rs.

S.No	Year	ADP Allocation	Utilization	%age utilization
1.	1 st Five Year Plan (1955-60)	10.000	10.000	100
2.	2 nd Five Year Plan (1960-65)	39.420	39.400	100
3.	3 rd Five Year Plan (1965-70)	88.100	88.000	99
4.	No Plan Period (1970-78)	604.100	576.000	95
5.	5 th Five Year Plan (1978-83)	1216.800	1215.500	99
6.	6 th Five Year Plan (1983-88)	3174.000	3102.300	98
7.	7 th Five Year Plan (1988-93)	4916.000	4709.900	98
8.	8 th Five Year Plan (1993-98)	8277.300	7768.900	94
9.	Non Plan Period (1998-2005)	20568.409	19239.389	93.5
10.	*MTDF 2005-10	35985.000	32599.315	90.6
	MTDF 2010-15			
11.	2010-11	6282.788	5923.365	94.3
12.	2011-12	8284.00	8229.000	99.3
13.	2012-13	9547.036	--	--

****MTDF: Medium Term Development Framework.**

Source: *Planning & Development Department –Muzaffarabad.

Azad Jammu & Kashmir

Development Expenditure for the Year 2010-11

S.#	Sector	Revised Allocation 2010-11			Utilization 2010-11			%age Utilization on Allocation
		Local	F.Aid	Total	Local	F.Aid	Total	
1	Agriculture	82.551	0.000	82.551	73.027	0.000	73.027	88
2	Civil Defense	27.434	0.000	27.434	27.608	0.000	27.608	101
3	Development Authorities	94.825	0.000	94.825	94.176	0.000	94.176	99
4	Education	410.720	0.000	410.720	330.471	0.000	330.471	80
5	Environment	10.156	0.000	10.156	10.136	0.000	10.136	100
6	Foreign Aided Projects	196.000	658.487	854.487	152.202	947.491	1099.693	129
7	Forestry/Fisheries	168.878	0.000	168.878	146.007	0.000	146.007	86
8	Health	167.273	0.000	167.273	146.959	0.000	146.959	88
9	Information & Media Dev.	11.156	0.000	11.156	8.581	0.000	8.581	77
10	Information Technology	126.059	0.000	126.000	65.920	0.000	65.920	52
11	Industries & Minerals	92.970	0.000	92.970	83.217	0.000	83.217	90
12	Local Govt. & Rural Dev.	630.526	0.000	630.526	630.517	0.000	630.517	100
13	Power	775.119	0.000	775.119	698.149	0.000	698.149	90
14	PP&H	396.983	0.000	396.983	334.977	0.000	334.977	84
15	Research & Dev.	56.704	0.000	56.704	54.885	0.000	54.885	97
16	Social Welfare	19.248	0.000	19.248	22.753	0.000	22.753	118
17	Sports	95.000	0.000	95	79.032	0.000	79.032	83
18	Transport & Communication	2197.422	0.000	2197.422	1959.984	0.000	1959.984	89
19	Tourism	65.336	0.000	65.336	57.273	0.000	57.273	88
	Total	5624.360	658.487	6282.788	4975.874	947.491	5923.365	94

Source:-Accountant General Office, Muzaffarabad.

Azad Jammu & Kashmir

Non-Development Expenditure for the Year 2010-11

S.#	Department	Actual 2010-11	Budget Estimates 2011-12
1	General Administration	1098.132	1396.709
2	Board of Revenue	419.341	433.391
3	Stamps	11.379	12.088
4	Land Revenue & Settlement	13.131	14.441
5	Relief & Rehabilitation	760.453	685.775
6	Pension	2312.964	2300.000
7	Public Relation	65.323	75.097
8	Administration of Justice	421.022	641.522
9	Home (Police)	2568.796	2769.581
10	Jails	79.869	83.330
11	Civil Defense	51.924	39.984
12	Armed Service Board	27.135	30.821
13	Communication & Works	1773.505	1473.203
14	Education	10339.069	11083.674
15	Health	2494.565	2582.315
16	Sports Youth & Culture & Transport	41.784	44.420
17	Religious Affairs	105.741	114.957
18	Social Affairs & Woman Affairs	71.855	82.133
19	Agriculture	317.638	336.287
20	Animal Husbandry	323.999	346.194
21	Food	109.089	116.865
22	State Trading	2228.020	1993.650
23	Forests	442.722	481.612
24	Cooperative	33.147	37.713
25	Electricity	4504.357	4968.002
26	Local Govt. & Rural Dev.	235.685	258.595
27	Industry, Labour & Mineral Resources	68.060	78.277
28	Printing Press	33.032	35.309
29	Sericulture	41.274	42.555
30	Tourism / Wild Life / Fisheries	70.299	74.326
31	Miscellaneous (Grants)	824.678	3632.474
	Total	31887.988	36265.000

Source:-Finance Department, Muzaffarabad.

Budget 2010-11
Total General Revenue Receipts in AJ&K
2010-11 & 2011-12

(Rs. In million)

S #	Department	Actual 2010-11	Budget Estimates 2011-12
1	Provincial Excise	2,503.911	3,300.000
2	Land Revenue & Settlement	50.769	10.000
3	Stamps	97.870	200.000
4	Forests	298.052	350.000
5	Registration	33.128	25.600
6	Administration of Justice	17.688	30.000
7	Jails	0.346	0.370
8	Home (Police)	54.978	45.000
9	Education	56.549	60.000
10	Health	10.833	12.000
11	Agriculture	3.128	3.500
12	Animal Husbandry	10.104	10.000
13	Co-operative	0.030	0.030
14	Industries, Labour & Minerals	20.489	30.000
15	Sericulture	1.529	1.500
16	Miscellaneous	1,347.627	1,800.000
17	Communication & Works	146.459	255.000
18	Electricity	5536.428	6,900.000
19	Printing Press	13.021	10.000
20	Armed Service Board	11.180	12.000
21	Religious Affairs	18.835	15.000
22	Food	330.554	550.000
23	Tourism / Wild Life / Fisheries	28.513	25.000
	Total (1-23)	10592.021	13,645.000
24	Water Usage Charges Mangla	1279.045	720.000
25	Income from Kashmir Council	6067.884	6,900.000
26	Federal Tax Share	6,143.292	9,940.000
27	Revenue Deficit	6,796.959	5,060.000
	Total (24-27)	20287.180	22,620.000
	G. Total	30,879.201	36,265.000

Source:-Finance Department, Muzaffarabad.

Vital Statistics of AJK and Pakistan (2010-11).

Description	AJK	Pakistan
Area (Sq.km)	13,297	796,096
Cultivated land (%)	13	28
Area under productive forest (%)	11.6	5.0
Villages	1654	48344
Population (projected in million)	4.059	170.00
Population Growth Rate (%)	2.41	1.8+
Unemployment Rate per Annum (%)	13	15
Literacy (%)	64	56
Enrolment rate Primary BOYS (%)	95	97
Enrolment rate Primary GIRLS (%)	88	83
Road density (km/sq. km)	0. 48	0.32
Infant mortality (per 1000)	56	82
Population per hospital bed	1801	1575
Population per doctor	5685	1254
Immunization Coverage (MICS 2007-08) (%)	37	53
Per capita power availability (KWH)	284.5	247
Rural/Urban ratio	88:12	67:33
Pop. Density per sq. Km.	305	214
Road Density per sq. Km.	0.48	0.32
Per capita income (per annum) US\$	1254	1254

Source: i. Federal Bureau of Statistics, Islamabad.
 ii. Deptts. of Health , Education & Public Works-Muzaffarabad

2005 EARTHQUAKE DAMAGES

Source: SERRA Office, Muzaffarabad.

Important Statistics

●	Affected area (Sq. Km)	7000
●	Population affected (Million)	1.8
●	Villages affected	977
●	Houses Damaged	3,14,474
●	Deaths	46,570
●	Injured	33,136
●	Estimated Losses in Private Sector:	Rs. 60.875 Billion
●	Estimated Damages in Public Sector:	Rs. 64.328 Billion

Total Damages: Rs. 125.203 Billion

A. Losses to Civil Society

S #	Sector	Damages (Rs. In Billion)
1	Private Housing	50.000
2	Economic Assets	10.875
	Total:	60.875

B. Deaths/Injured/Houses:

S.#	District	Deaths	Injured	Houses (Uninhabitable) Damaged/ Destroyed
1	Neelum	446	552	13,963
2	Muzaffarbad	34,284	21,906	146,798
3	Bagh	9,366	7,440	95,516
4	Rawalakot	1,117	1,884	55,307
5	Sudhnuti	4	25	2,890
6	Mirpur	6	0	0
Total		45,223	31,807	314,474

PUBLIC SECTOR DAMAGES

Rs. In Billion

S#	Sector	Damages	Est. Cost
1.	Education	Education institutions: 2792 including 1702 primary schools, 174 masjid schools, 570 middle, 296 high/ higher secondary schools, 23 inter, 14 degree colleges, 6 post graduate colleges & 2 university campuses	28.239
2.	Transport & Communication	Roads: 810 km Bridges: 2725 meter	6.140
3.	Health	Health institutions: 176 including 96 BHUs, 47 civil dispensaries, 15 RHCs, 4 THQs, 2 CMHs, 2 DHQs, Jinnah Dental Hospital, 01 Chest Disease Hospital & Abbas Institute of Medical Sciences (AIMS) MZD	5.926
4.	Physical Planning & Housing	Official accommodation: 806 Nos (2050385 sft)	5.153
5.	LG&RDD	Rural access roads: 1809 km, jeepable bridges: 18, foot bridges: 56 and rural water supply & solid waste: 1630	4.988
6.	Environment	Forests, landslides and office buildings: 128	1.394
7.	Livelihood	Means of livelihood	1.577
8.	Electricity	Electrical infrastructure	0.839
9.	HEB	Hydel power stations	0.105
10.	Others	(Industries, Tourism, Agriculture)	9.967
Total			64.328

Education Sector

Institutions	Pre-Earthquake	Damaged/ Destroyed
Primary Schools	4228	1875
Middle Schools	1032	571
High Schools	606	271
H.S. Schools/ Colleges	138	68
University	01	01
College of Education	02	01
Model Science College	03	01
Literacy School	03	03
Vocational Centre	01	01
Total	6020	2792

Transport and Communication

Type	Total Length (KM)	Damage (KM)
Metalled Roads	4852	810

Type	Span of Damaged bridge
Bridges	2725 meters

Health Sector Damages

Facilities	Pre-Earthquake	Damaged/Destroyed
Dispensaries	100	47
BHUs	194	122
RHCs	32	19
THQ Hospitals	08	04
DHQ Hospitals	05	02
CMHs	02	02
AIMS/Hospitals	03	03
Offices	06	06
Total	350	176

Governance Sector

Category	Damage Buildings	Covered Area (in Sft.)
Physical Planning & Housing Sector Buildings	806	1,479,430

Water Supply Sector

Damages	Total (Nos)	Damaged/ Destroyed	% age of damaged schemes
i) Urban Water Supply	23	10	43%
ii) Rural water Supply	6500	1603	25%
Total	6523	1613	25%

State Forests Damages

S.No	District	Forest Area (AC)	Badly affected Forest Area (AC)
1	Neelum	6,77,258	86,413
2	Muzaffarabad	2,18,168	1,65,808
3	Bagh	1,56,075	78,038
4	Poonch	65,240	32,000
5	Sudhnuti	55,520	10,000
Total		11,72,441	3,72,250

Power Sector

Facility	Pre-Earthquake	Damaged/Destroyed
Electric Connections	390747	77284
Hydel Stations	06	05
HT lines (KM)	7677	1408
LT lines (KM)	12565	3273
Grid Stations	19	05
Transformers	7250	928

Damages of Agriculture Sector

Particulars	Unit	Qty	Damages	
			Unit Cost	Amount (Rs. In Million)
1. Land Terraces	Hectares	3013	0.03	90.400
2. Protection bunds	Cubic Meters	20000	Nil	Nil
3. Storage lost	Acres	150000	0.013	1963.600
4. Agri.Inputs	Acres	150000	Nil	Nil
5. Damages to fruit orchards	No	15033	0.005	225.200
5.1 Fruit Plant Nurseries	Hectares	12	Nil	Nil
5.2 Planting Fruit Trees	No	90000	Nil	Nil

Crop Sector Damages

Category	Estimated value of losses in Million) (Rs.)
Field Terraces	201.000
Fruit Plant Damages	225.000
Research and Extension building damages	458.000
Storage lost at farm level	1964.00
Crop productivity loses	744.000
Irrigation infrastructure damages	240.000
Other damages	3832.00
Total	7664.00

Animal Husbandry Deptt. (Public Sector)

S.#	Particulars	Damage Estimate			
		Unit	Qty.	Unit Cost	Amount (Rs. In Million)
1	Civil Work (Offices, Residences, Labs, Poultry Sheds, Hatcheries).	Sft	229845	1000	229.845
2	Office/ Lab Equipment	L/S	-	-	4.180
Total		-	-	-	273.025

Animal :Husbandry Deptt. (Private Sector)

S.#	Particulars	Damage Estimate			
		Unit	Qty.	Unit Cost (avg.)	Amount (Rs. In Million)
1	Animal death/ replacement				
	(i) Cattle	No	81,939	28780	2358.234
	(ii) Buffalo	No	55,239	37294	2060.109
	(iii) Goat/ Sheep	No	88,427	40000	353.700
2	Animal Productivity (Survived Cattle and Buffalo)	No	3,83,332	-	3600.100
3	Animal Sheds (Gawals)	House Hold	1.30,908	24000	3141.800
4	Poultry Birds	No	2,67,105	-	48.100
Total					11,562.043

Tourism Sector Damages

District	No of Rest Houses	Damaged	Damaged (Cover area in Sq. m)
Muzaffarabad	08	08	21,802
Neelum	08	04	15,913
Bagh	04	04	13,814
Poonch	06	04	10,247
Kotli	04	02	4,100
Total	30	22	46256

IT Sector

Facility	Pre-Earthquake	Damaged/Destroyed
Computer lab in Colleges	36	17
Computer lab in High Schools	47	24
IT Training Centers	07	03
Govt. Employees Training Institutes	02	01
Total	92	45

Rescue & Relief Operations

World's biggest rescue and relief operations started within hours of the occurrence of the earthquake

- 50 helicopters deployed
- Generated 19,000 sorties

■ People initially migrated to Camps(Total No.):	116,512
■ Camps established (Total No.):	125

Relief items distributed:

i. Medicines	855.2 tons
ii. Rations	75,962 tons
iii. Blankets	1.91 million
iv. G.I sheets	6.000 million
v. Tents	0.400 million
vi. The relief goods provided by the NGOs/ Civil Society are uncountable.	

- All primary and secondary roads were opened, communication and power restored.
- Averted additional deaths from exposure to severe climatic condition, hunger and disease

(II)
Progress of Reconstruction & Rehabilitation Program in
AJK

RECONSTRUCTION & REHABILITATION PROGRAMME.

Due to the earthquake of 8th Oct 2005 about 7000 Sq Km area was affected. It severely affected 1.8 million people while 46570 people died. It also seriously injured 33136 and displaced 0.116 million people. Infrastructure and communication system was collapsed and agricultural lands were severely damaged. The main objective of the Reconstruction Programme is to move towards permanent and sustainable reconstruction and rehabilitation of the affected area with the aim to “Build Back Better” in terms of physical infrastructure, size and scope of activities; and the quality of services to the people of affected areas.

Reconstruction & Rehabilitation Programme is mandated to undertake the gigantic task in the earthquake affected areas in the major socio-economic sectors i.e.

- **HOUSING:** Includes the Rural and Urban housing as well as town planning.
- **LIVELIHOODS:** Includes livelihoods cash grants for vulnerable households;
- **EDUCATION:** All education facilities have been made functional through provision of interim structures like pre-fabricated buildings and large weather proof tents. Moreover comprehensive permanent reconstruction strategy has been finalized and approved by the competent forum.
- **HEALTH:** All health facilities have been made functional through provision of interim pre-fabricated structures and a comprehensive health strategy has been finalized for permanent Reconstruction Programme.
- **WATER & SANITATION:** Water and sanitation (WATSAN) strategy covering water supply, sanitation, solid waste management and reconstruction of relevant departments building has been finalized and approved by the competent forum.
- **GOVERNANCE:** The administrative structure in the districts of Muzaffarabad, Neelum, Bagh, Poonch and Sudhnuti were disrupted by the destruction of administrative complexes. The majority of buildings, both offices and residences were destroyed or damaged, including the civil secretariat and the Supreme Court. Governance sector strategy aimed at reconstruction and rehabilitation of all damaged building of Government department has been finalized and approved by ERR Council.
- **POWER:** The Power sector was severely damaged by the earthquake. However most of the damage structure was repaired on urgent basis. Distribution and retail services delivery infrastructure were the most damaged by the earthquake. Power sector strategy has been approved for reconstruction of damaged infrastructure.
- **ROADS/TRANSPORTS:** The earthquake caused severe damage to the transport system in the affected areas of AJ&K. It is estimated that 2551 Km of roads were partially or fully damaged in AJ&K. The poor state of roads is one of the largest challenges facing

Reconstruction Programme. Transport sector strategy for reconstruction & rehabilitation has been finalized and approved by the competent forum.

- **TELECOMMUNICATION:** In the telecommunication sector, the key organizations in the earthquake affected areas are mainly PTCL and SCO. Telecommunication sector has been finalized and approved by the ERRA Council.
- **SOCIAL PROTECTION:** Although the entire population affected by the earthquake is vulnerable, the social protection program focused specifically on the groups which are at the greatest risk. Social protection strategy for reconstruction & rehabilitation has been finalized.
- **ENVIRONMENT:** The most visible affected the earthquake had on the environment is the land-shearing, liquefaction, and slides that occurred as a consequence of the earthquake. The earthquake destroyed water channels; resulted in the siltation of some rivers and streams; deteriorated forest resources; caused massive destruction to farm land, especially terraced land situated on steep terrain; and destroyed many fish farms. The disposal of massive amounts of debris from fallen structures is a significant environmental challenge.
- **TOURISM SECTOR:** The vast majority of hotels and other tourist infrastructure were destroyed by the earthquake. It is yet to be formulated a policy approach for the reconstruction and rehabilitation of the tourism sector.
- **Urban Development:** Master Plan for 3 cities (Muzaffarabad, Bagh & Rawalakot) prepared. City Development Projects for these three cities costing Rs. 21.136 billion, 7349.76 million and 8202.60 million respectively are approved.

Overall Disbursement of Housing Cash Grant for Rural and Urban Houses:

(Rs. in Billion)						
District	Rural		Urban		G. Total	
	@ 50,000		@ 50,000		Beneficiaries	Amount
	Beneficiaries	Amount	Beneficiaries	Amount		
1st Installment					314474	7.862
2nd Installment	281377	20.472	25386	2.091	306763	22.563
3rd Installment	224086	5.602	-	-	224086	5.602
4th Installment	121310	6.066	16093	0.805	137403	6.870
G. Total		32.140		2.896		42.897

Payment for Injured/Deaths/Multiple Deaths

S#	District	Injured (33,136)	Amount	Deaths (46,570)	Amount	Total Amount Paid
1	Muzaffarbad	21,906	453.805	34,284	3428.400	3882.205
2	Bagh	7,440	159.525	9,366	936.600	1096.125
3	Rawalakot	1,884	38.695	1,117	111.700	150.395
4	Sudhnoti	25	0.545	4	0.400	0.945
5	Neelum	552	12.205	446	44.600	56.805
6	Mirpur	--	--	6	0.600	0.600
Total		31807	664.775	45,223	4522.300	5187.075

Disbursement of Livelihood Support Cash Grant (Completed)

S. No	District	Beneficiaries	Amount Paid (Rs. in Million)
1	Muzaffarabad	54040	1070.469
2	Bagh	38884	781.488
3	Poonch	30930	622.926
4	Sudhnoti	3183	65.502
5	Neelum	5247	106.326
Total:		132,284	2646.711

Overall Reconstruction Projects Status

S#	Sectors	Projects/ Facilities	Completed	Work in progress	Work yet to be started
1	Education	2792	1046	988	758
2	Health	159	98	37	24
3	WATSAN	2830	2542	260	28
4	Transport				
	(Roads =19 & Bridges=64)	83	71	11	1
5	Power	58	58	-	-
	(Electricity, Civil Works & Hydroelectric Board)				
6	Environment	128	42	85	1
	(Forestry Buildings, Debris Removal & Reforestation/ Slope Stabilization)				
7	Governance (Buildings)	233	90	116	27
8	Medical Rehabilitation	2	2	-	-
9	Social Protection	4	2	2	-
10	Livelihood	1182	482	537	163
	(Agriculture , Livestock & CLRP's)				
11	Telecommunication	44	44	-	-
12	AJK Urban Development	232	2	40	190
	Total	7747	4479	2076	1192

Overall portfolio of Reconstruction Programme

(Rs. in billion)

S.No.	Source	Portfolio	Utilization	Balance	
A.	1	Earthquake Emergency Assistance Project (EEAP) (ADB Funded) (Reconstruction of 309 schools, 32 Health facilities including equipment, 4 Major Roads, 11 link roads (Length 226 Km), 10 RCC Bridges , sub-structure of 41 steel bridges and rehabilitation damaged power infrastructure including 58 buildings)	17.886	17.380	0.506
	2	SFD&KF (Saudi & Kuwait Fund) (2 University Campuses Mzd. & RKT , 33 colleges, 2 DHQ complexes)	13.497	3.860	9.637
	3	EAFP Part-Z/ (World Bank Funded) (201 primary schools, 4 Secretariat Buildings,3 Police Stations, 55 local council buildings and 56 KM rural link roads)	2.597	2.597	0
	4	Chinese Preferential Buyer's Credit (232 sub-projects of Mzd, Bagh & RKT City)	28.169	2.046	26.123
Sub-total(A)		62.149	25.883	36.266	
B.	5	West Bank Bypass Road and Naluchi Bridge (Length of Road 5km Bridge 246 m)	1.789	1.013	0.776
	6	Housing Cash Grant (314474 beneficiaries)	49.96	49.659	0.301
	7	Payments of Injured (31807)/ Deaths (45223)/ Livelihoods Cash Grant (132284) and Landless (9873) Total (219187 beneficiaries)	8.574	8.574	0
Sub-total(B)		60.323	59.246	1.077	
C.	8	GOP Funded Projects/Facilities (Total 5145, completed 2223, work in progress 1884 and work yet to be started 1038)	70.742	10.392	60.35
D.	9	44 Telecom Buildings under telecom project	0.63	0.630	0
	10	Rehabilitation of HEB Project	0.102	0.102	0
	11	Reconstruction of 13 Post Office Buildings	0.043	0.043	0
	12	Medical rehabilitation 02 Centre	0.0248	0.0248	0
Sub-total(D)		0.7998	0.7998	0	
E.	13	Land Acquisition (10479 Kanal) (President Relief Fund)	4.187	2.102	2.085
F.	14 *	Sponsored Projects (Total 1632, completed 1545 and work in progress 35)	21.607	17.660	3.947
G. Total **		219.808	116.083	103.725	

*Tentative Cost

**Excluding (i) Rescue & Relief Operation (ii) Soft component implemented by Sponsors, NGO's & INGO's.